

XC60



XC60 ESSENTIAL

The Essential model comes with all the features you would expect from Volvo. Beyond the innovative City Safety technology, 17" Valder diamond cut alloy wheels and RSC (Roll Stability Control) system, the Essential model offers active bi-xenon headlights with headlight cleaning system, LED daytime running lights, electrically adjustable and heated door mirrors, laminated side windows with water repellent glass, roof rails and chrome decor around the side windows. Interior details include electronic climate control, leather upholstery, luxury floor mats, power child locks, ISOFIX attachments, shimmer graphite aluminium trim, cruise control and a high performance multimedia audio system with a 7" colour display screen, Internet connectivity and Bluetooth®.

Variants:	Diesel	Petrol
	D4 Geartronic	T5 Geartronic

XC60 EXCEL

The Excel model is further enhanced with rear park assist, rain sensor, grocery bag holder, digital combined instrument cluster with TFT crystal display and a power adjustable driver seat with memory function and electric lumbar support - all designed to complement the existing high level of specification whichever variant you choose.

Variants:	Diesel	Petrol
	D4 Geartronic	T5 Geartronic
	D5 Geartronic AWD	T6 Geartronic

XC60 ELITE

The Elite model is the ultimate upgrade. Over and above the Excel variants, the Elite variants have a combination of power adjustable passenger seat, a 3-spoke leather steering wheel with decor inlays, a high version interior lights package and a new power operated tailgate.

Variants:	Diesel	Petrol
	D4 Geartronic	T5 Geartronic
	D5 Geartronic AWD	T6 Geartronic

XC60 *R-DESIGN*

A unique power steering system and 18" Ixion II diamond cut alloy wheels together with the R-DESIGN chassis enhance the handling of this model. Visual presence is complemented with silver matt door mirrors, unique rear exhaust pipes, R-DESIGN leather sport seats with side support, R-DESIGN leather steering wheel and unique aluminium interior trim.

Variants:	Diesel	Petrol
	D4 Geartronic	T5 Geartronic
	D5 Geartronic AWD	T6 Geartronic AWD





THE RIGHT EQUIPMENT. It's essential that your Volvo comes equipped with everything you need. Below you'll find the standard equipment lists for each model variant, plus optional equipment to personalise your Volvo XC60. And as you'd expect, there is an array of industry-leading, cutting edge safety innovations.

STANDARD EQUIPMENT - SAFETY AND SECURITY	Essential	Excel	Elite	R-DESIGN
City Safety	•	•	•	•
Dual Stage Driver and Passenger Airbags	•	•	•	•
Passenger airbag cut-off switch	•	•	•	•
SIPS (Side Impact Protection System)	•	•	•	•
Dual Chamber SIPS Airbags	•	•	•	•
IC (Inflatable Curtains)	•	•	•	•
RSC (Roll Stability Control)	•	•	•	•
WHIPS (Whiplash Protection System)	•	•	•	•
ABS (Anti-lock Brake System) and FBS (Fading Brake Support) with HBA (Hydraulic Brake Assist) and EBD (Electronic Brake Distribution), RAB (Ready Alert Brakes) and EBA (Emergency Brake Assist)	•	•	•	•
DSTC (Dynamic Stability and Traction Control)	•	•	•	•
Hill descent control (standard on D5 and T6 AWD only)		•	•	•
5 x three point seat belts	•	•	•	•
Seat belt pre-tensioners (front and rear)	•	•	•	•
Pre-prepared restraints	•	•	•	•
Head restraints – all 5 seats	•	•	•	•
ISOFIX Attachment (rear seats)	•	•	•	•
Anti-theft alarm including immobiliser, volume sensor and level sensor	•	•	•	•
Interior movement sensor	•	•	•	•
Key integrated remote control central locking with deadlocking system and auto open/close windows/sunroof	•	•	•	•
Load cover (cargo area)	•	•	•	•
Visible VIN plate	•	•	•	•
Adaptive brake lights including high level LED brake light	•	•	•	•
Power parking brake	•	•	•	•
Side marker illumination	•	•	•	•
Home safe and approach lighting	•	•	•	•
IDIS (Intelligent Driver Information System)	•	•	•	•
Warning triangle	•	•	•	•
Laminated side windows with water repellent glass	•	•	•	•
Self opening tailgate			•	
Rain sensor		•	•	•
Power child locks	•	•	•	•

STANDARD EQUIPMENT - EXTERIOR	Essential	Excel	Elite	R-DESIGN
17" Valder diamond cut alloy wheels – 235/65 R17 V tyres (D4 and T5 only)	•	•	•	
18" Zephyrus alloy wheels – 235/60 R18 V tyres (D5 and T6 only)		•	•	
18" Ixion II diamond cut alloy wheels – 235/60 R18 V tyres (R-DESIGN only)				•
Tempa spare wheel with jack kit	•	•	•	•
Heated and electrically adjusted outer mirrors with ground lights and auto-fold	•	•	•	•
Roof rails (silver)	•	•	•	•

STANDARD EQUIPMENT - EXTERIOR Continued	Essential	Excel	Elite	RDESIGN
Chrome window trim	•	•	•	•
Chromed tailgate strip	•	•	•	•
Chrome lower door moulding			•	
Standard Volvo tread plates	•	•	•	
Rear skid plates	•	•	•	
Electronic all wheel drive system with Instant Traction™ (Haldex Coupling) (D5 and T6 AWD only)		•	•	•
Dual integrated exhaust tail pipes	•	•	•	
Rear park assist		•	•	•
Dynamic Chassis	•	•	•	
Sports Chassis				•
Active bending Bi-Xenon headlights with headlight cleaning system	•	•	•	•
RDESIGN silver matt door mirrors				•
RDESIGN grille with logo				•
RDESIGN tread plates				•
RDESIGN full body kit (front and rear spoilers, side skirts, unique rear diffuser and twin exhaust tail pipes)				•

STANDARD EQUIPMENT - INTERIOR	Essential	Excel	Elite	RDESIGN
ECC (Electronic Climate Control) with pollen filter	•	•	•	•
Fabric covered B-pillar panels with ventilation	•	•	•	•
Information Centre	•	•	•	•
Analog driver information module	•			
Digital driver information module with TFT crystal display		•	•	•
Cruise control	•	•	•	•
Rear centre armrest with cup holders and storage	•	•	•	•
Front and rear power windows	•	•	•	•
Illuminated driver and passenger vanity mirrors	•	•	•	•
Front and rear reading lights	•	•	•	•
Interior ambient lighting – High version			•	
Interior ambient lighting – Medium version	•	•		•
Frameless auto-dimming rearview mirror	•	•	•	•
Front centre armrest with cup holders	•	•	•	•
12V socket (front tunnel console/cargo area)	•	•	•	•
Manually adjustable passenger seat – 6 way	•	•		•
Power driver seat with memory for seat and side mirrors and electric lumbar support		•	•	•
Power passenger seat			•	
Versatile split-folding rear seat (40%/20%/40%)	•	•	•	•
Height adjustable driver and passenger seats with lumbar support	•	•	•	•
Leather 3-spoke steering wheel and leather gear knob cover	•	•		
Leather 3-spoke steering wheel with decor inlays and leather gear knob cover			•	
Steering wheel remote audio controls	•	•	•	•
Grocery bag holder – cargo area		•	•	





STANDARD EQUIPMENT - INTERIOR Continued	Essential	Excel	Elite	R ^{DESIGN}
Chrome rotary knobs	•	•	•	•
Chrome frame around Light Switch Module (LSM)	•	•	•	•
Chrome mannequin on centre console	•	•	•	•
Height and reach adjustable steering column	•	•	•	•
Shimmer graphite aluminium decor inlays	•	•	•	
Leather upholstery	•	•	•	
Luxury floor mats	•	•	•	
High Performance multimedia & connectivity audio system – 1 x DVD/radio, 4 x 40W amplifier, Bluetooth®, USB and aux. input (MP3/WMA compatible), 8 speakers and a 7" colour display screen – including connected service booking	•	•	•	•
Digital owner's manual, English	•	•	•	•
Front and rear ashtray with cigarette lighter	•	•	•	•
Aluminium sill protector – tailgate		•	•	•
R ^{DESIGN} leather sports steering wheel with aluminium inserts and logo				•
R ^{DESIGN} illuminated sports gear knob				•
R ^{DESIGN} aluminium sports pedals				•
R ^{DESIGN} decor inlays				•
R ^{DESIGN} sports perforated leather seats				•
R ^{DESIGN} sports floor mats				•

* OPTIONAL EQUIPMENT - SAFETY AND SECURITY	Price incl. 14% VAT	Essential	Excel	Elite	R ^{DESIGN}
BLIS (Blind Spot Information System) and Cross Traffic Alert (CTA)	R8,100.00	o	o	o	o
PCC (Personal Car Communicator) with keyless drive	R5,500.00	o	o	o	o
Dark tinted windows (rear side doors and cargo area)	R3,150.00	o	o	o	o
LDW (Lane Departure Warning) with DAC (Driver Alert Control) and front facing camera (i)	R9,600.00	o	o	o	o
ACC (Adaptive Cruise Control) collision warning with auto brake, pedestrian and cyclist detection with queue assist (i) (iii)	R19,000.00	o	o	o	o
IR (Infrared) reflective glass windscreen	R4,900.00	o	o	o	o
Self opening tailgate with release motor	R5,300.00	o	o	•	o
Dual booster cushions rear seats	R2,750.00	o	o	o	o
First aid kit	R300.00	o	o	o	o

* OPTIONAL EQUIPMENT - INTERIOR	Price incl. 14% VAT	Essential	Excel	Elite	R ^{DESIGN}
Speed dependent steering system with 3 settings (normal, city, sport)	R2,750.00	o	o	o	o
Panoramic laminated power glass tilt and slide sunroof	R10,900.00	o	o	o	o
Sports leather seats with side support	R5,750.00	o	o	o	n/a
Power driver seat with memory for seat and side mirrors	R4,350.00	o	•	•	•
Power passenger seat (v)	R4,350.00	o	o	•	o
Quick foldable backrest – passenger seat (not with sport seats)	R350.00	o	o	o	n/a
Heated front seats	R1,750.00	o	o	o	o
Heated rear seat (ii)	R1,750.00	o	o	o	o
Electric folding rear headrests	R850.00	o	o	o	o
Digital driver information module with TFT crystal display (D4 and T5 Essential only)	R4,350.00	o	•	•	•
Interior lighting – High version	R700.00	o	o	•	o

* OPTIONAL EQUIPMENT - INTERIOR Continued	Price incl. 14% VAT	Essential	Excel	Elite	R-DESIGN
Modern wood decor inlays	R4,350.00	o	o	o	n/a
Urbane wood decor inlays	R4,350.00	o	o	o	n.a
Piano black decor inlays	R2,200.00	o	o	o	n/a
Leather steering wheel with decor inlays, 3-spoke	R700.00	o	o	●	n/a
Urbane wood leather 4-spoke steering wheel	R2,150.00	o	o	o	n/a
Gearshift paddles behind steering wheel	R1,800.00	o	o	o	o
Harman Kardon Premium Sound multimedia & connectivity audio system, 1 x DVD/radio, 5 x 130W amplifier, Bluetooth®, USB and aux. input (MP3/WMA compatible), 12 speakers and a 7" colour display screen – including connected service booking	R15,600.00	o	o	o	o
Remote control for audio system	R1,150.00	o	o	o	o
Subwoofers (2 x 6.5" subwoofers with 2 x 130W amplifier) (only with premium sound) (vii)	R4,900.00	o	o	o	o
Navigation system with advanced voice control and 3D maps	R22,000.00	o	o	o	o
AQS (Air Quality System)	R1,250.00	o	o	o	o
CZIP (Clean Zone Interior Package) (vi)	R450.00	o	o	o	o
Sunglass holder	R300.00	o	o	o	o
Rain sensor – automatic windscreen wiper activation	R850.00	o	●	●	●
Automatically dimmed inner rearview mirror with compass	R1,250.00	o	o	o	o
Automatic dimming side mirrors	R1,650.00	o	o	o	o
Grocery bag holder – cargo area	R750.00	o	●	●	o
Aluminium sill protector – tailgate	R750.00	o	●	●	●

* OPTIONAL EQUIPMENT - EXTERIOR	Price incl. 14% VAT	Essential	Excel	Elite	R-DESIGN
Metallic/Pearlescent paint	R2,200.00	o	o	o	o
17" Valder diamond cut alloy wheels – 235/65 R17 V tyres (standard on D4 and T5)	no cost	●	o	o	n/a
18" Zephyrus alloy wheels – 235/60 R18 V tyres (standard on D5 and T6)	R7,000.00	o	o	o	n/a
18" Pan (silver bright) alloy wheels – 235/60 R18 V tyres (no cost for D5 and T6)	R7,000.00	o	o	o	n/a
19" Fenrir black chrome alloy wheels – 235/55 R19 W tyres	R7,000.00	o	o	o	n/a
20" Titania diamond cut alloy wheels – 255/45 R20 V tyres	R11,400.00	o	o	o	n/a
20" Avior alloy wheels – 255/45 R20 V tyres	R11,400.00	o	o	o	n/a
20" Cratus alloy wheels – 255/45 R20 V tyres (R-Design only)	R11,400.00	n/a	n/a	n/a	o
20" Ixion II diamond cut alloy wheels – 255/45 R20 V tyres (R-Design only)	R11,400.00	n/a	n/a	n/a	o
Rear park assist	R2,250.00	o	●	●	●
Front and rear park assist	R2,700.00	o	o	o	o
Rear parking camera	R9,300.00	o	o	o	o
Load compensating suspension (NIVOMAT)	R7,650.00	o	o	o	n/a
Active Four-C Chassis (Continuously Controlled Chassis Concept) (iv)	R13,900.00	o	o	o	n/a
Locking wheel nuts	R750.00	o	o	o	o
Heated windscreen washer nozzles	R750.00	o	o	o	o

● = standard; o = option; n/a = not available * Fitted at factory

- (i) Cannot be ordered in conjunction with IR reflective glass windscreen.
- (ii) Heated rear seat must be combined with heated front seats.
- (iii) Must be ordered in combination with Lane Departure Warning (LDW) system.
- (iv) Active Four-C Chassis cannot be combined with Load Compensating Suspension.
- (v) Must be ordered with power driver seat.
- (vi) Only in combination with Air Quality System (AQS).
- (vii) Not available on T6 FWD.



Prices are inclusive of 14% VAT	ESSENTIAL	EXCEL	ELITE	<i>R</i> DESIGN
SPORT PACK (T5, D4)	R 17 000.00	R 14 500.00	R 11 000.00	n/a
Digital driver information module	o	●	●	
Self opening tailgate (with release motor)	o	o	●	
Locking wheel nuts	o	o	o	
Leather steering wheel with decor inlays, 3-spoke	o	o	●	
Park assist front and rear	o	o	o	
PCC with keyless drive	o	o	o	
Aluminium sill protector – tailgate	o	●	●	
18" Zephyrus alloy wheels – 235/60 R18 V tyres (swop for Valder, Pan or Fenrir)	o	o	o	
SPORT PACK (D5, T6)	n/a	R 10 500.00	R 7 500.00	n/a
Self opening tailgate (with release motor)		o	●	
Locking wheel nuts		o	o	
Leather steering wheel with decor inlays, 3-spoke		o	●	
Park assist front and rear		o	o	
PCC with keyless drive		o	o	
Gearshift paddles		o	o	
TECHNO PACK	R 31 000.00	R 28 500.00	R 25 500.00	n/a
Heated front seats	o	o	o	
Digital driver information module	o	●	●	
Self opening tailgate (with release motor)	o	o	●	
Navigation system with advanced voice control	o	o	o	
Air Quality System (AQS)	o	o	o	
Park assist front and rear	o	o	o	
PCC with keyless drive	o	o	o	
Rear parking camera	o	o	o	
Leather steering wheel with decor inlays, 3-spoke	o	o	●	
PREMIUM PACK	R 34 000.00	R 31 500.00	R 28 500.00	n/a
Heated front seats	o	o	o	
Digital driver information module	o	●	●	
Self opening tailgate (with release motor)	o	o	●	
Navigation system with advanced voice control	o	o	o	
Air Quality System (AQS)	o	o	o	
Park assist front and rear	o	o	o	
PCC with keyless drive	o	o	o	
Rear parking camera	o	o	o	
Harman Kardon Premium Sound with multi-media and connectivity, DVD, internet connectivity – AUX / USB / Bluetooth® / 7" colour display screen	o	o	o	
Leather steering wheel with decor inlays, 3-spoke	o	o	●	

Prices are inclusive of 14% VAT	ESSENTIAL	EXCEL	ELITE	<i>R</i> DESIGN
<i>R</i>DESIGN PLUS	n/a	n/a	n/a	R 21 000.00
Power seat, passenger				o
Heated front seats				o
Self opening tailgate (with release motor)				o
Lockable wheel bolts				o
Grocery bag holder, cargo area				o
Interior ambient lighting – High version				o
Paddle shifters				o
Park assist front and rear				o
PCC with keyless drive				o
20" Ixion II alloy wheels – 255/45 R20 V tyres (swop for Cratus)				o
<i>R</i>DESIGN PREMIUM PLUS	n/a	n/a	n/a	R 37 000.00
Power seat, passenger				o
Heated front seats				o
Self opening tailgate (with release motor)				o
Navigation system with advanced voice control				o
Grocery bag holder, cargo area				o
Interior ambient lighting – High version				o
Lockable wheel bolts				o
Paddle shifters				o
Park assist front and rear				o
PCC with keyless drive				o
Harman Kardon Premium Sound with multi-media and connectivity, DVD, internet connectivity – AUX / USB / Bluetooth® / 7" colour display screen				o
20" Ixion II alloy wheels – 255/45 R20 V tyres (swop for Cratus)				o

● = standard; o = option; n/a = not available



VOLVO SENSUS. YOU'RE IN CONTROL, NATURALLY.

SENSUS

YOUR SPACE

Yes, the new Volvo XC60 has a beautifully sculpted exterior. But why should passers-by get all the enjoyment? Since you'll spend most of your time in the driver's seat, we've designed a gorgeous space around you. We've made all your instruments and controls as easy to use and intuitive as possible. We call this approach to connecting you and your car with the world around you "Sensus". Our beautiful new Adaptive Digital Display is the latest expression of this philosophy. Not only does it give you all the information you need without overwhelming you with data, it also gives you three modes to choose from – Elegance, Eco and Performance. Together with the Sensus screen in the dashboard, it

makes commanding your drive an effortless experience. And with Sensus Connected Touch, the 7-inch Sensus screen becomes a connected multimedia hub, giving you access to embedded connected navigation, music streaming and internet connection.

But it's not just our displays that are things of functional beauty. We've put the same amount of care into the steering wheel, as well as our iconic floating centre stack with our trademark "mannekin" climate control buttons.

OH YES. DID WE MENTION SAFETY?

INTELLISAFE

WE CARE ABOUT YOU

In 1927 our founders, Assar Gabrielsson and Gustaf Larson, decided to make really strong cars that could cope with our rough country roads. But strength alone wasn't enough. They also had a vision: "Cars are driven by people," they said, "so the guiding principle behind everything we make at Volvo is – and must remain – safety." Now our goal is that, by 2020, nobody shall be seriously injured or killed in a new Volvo. We think our founders would have approved.

In order to help us achieve this goal, and in keeping with our philosophy of making your life easier, your XC60 has a whole suite of intuitive safety technologies inside it. They're there to support your daily driving, protecting you in the event of an accident and often preventing collisions in the first place. We call this IntelliSafe.

We know XC60 owners love driving, but in a world of busier and busier roads, you are constantly exposed to other people's

mistakes. That's why IntelliSafe offers some really smart technologies such as City Safety, Collision Warning with Full Auto Brake and Pedestrian Detection as well as Cyclist Detection.

And because you love driving, it's good to know that your XC60 doesn't just protect you – it actively supports you too. Take Active High Beam. With this system, your headlights stay on full beam all the time. When another car comes around towards you, the system prevents dazzling the other driver by shading out only as much of your beam as necessary – no more, no less. Our Dynamic Stability and Traction Control (DSTC) is another IntelliSafe technology. If there's a risk of your XC60 losing stability, DSTC applies just the right amount of brake force and reduces engine power as needed in order to prevent skidding. You'll probably never notice a thing.

But that's OK, we're just doing our job.

DRIVE-E

YOUR ENGINE CHOICE

Drive-E is at the heart of every Volvo we make. It's our all-encompassing approach to sustainable driving, our innovative thinking behind a whole range of technologies that will give you more efficiency – and lower running costs – without compromising on a pleasurable drive.

Our Drive-E technological advances include reducing the friction within our engines and a host of aerodynamic improvements to help you get the maximum benefit from your engine and the fuel you put into your car. We employ Start / Stop technology, energy

recovery systems and always strive to make our manufacturing processes more sustainable – all of the electricity for our factory in Sweden comes from clean, hydroelectric power. After all, environmentally-aware mobility is central to our philosophy of intelligent, thoughtful luxury.

Integral to this is the wide choice of powerful, efficient engines available for the XC60, ranging from the four-cylinder 2.0 litre turbodiesel D4, to the six-cylinder T6 242kW petrol option.



In town, City Safety is designed to prevent you from colliding with the car in front if it stops suddenly. This advanced IntelliSafe system works at speeds of up to 50 km/h and senses if you're about to collide with another car, then, if necessary, applies the brakes.



We've further improved our Blind Spot Information System (BLIS). It now uses radar technology to alert you to vehicles closing up in your blind spot. There's also Cross Traffic Alert, which watches out for vehicles you can't see when you're reversing out of tight parking spaces.



Because we care about other road-users just as much as you, Pedestrian Detection with Full Auto-Brake watches out for people walking into your path and applies the brakes if you're unable to react in time.

RDESIGN



Dynamically expressive. Flawlessly synchronised. Beautifully balanced. And that's just the sports chassis.

With the Volvo XC60 R-DESIGN variant, the well-equipped Volvo XC60 acquires even more confidence, inside and out. Boldly provocative yet tastefully reserved, the exclusive R-DESIGN styling elements express a definitive passion for sport. From the R-DESIGN grille badge, to the 90 mm tailpipes, the Volvo XC60 R-DESIGN exudes confidence at every turn. Yet, it's in the turns where the sports chassis really compliments the swift agility and sweeping artistry of this bold crossover.



Sports tailpipes

From behind, the dual 90 mm tailpipes give the XC60 R-DESIGN a powerful, no-nonsense demeanour.

Sports chassis

Perceptibly yet subtly different, the shocks, springs and anti-roll bars are adjusted and tuned to be firmer and more balanced. The result is improved control and a sportier, road hugging drive.

Sports steering wheel

Get to grips with this exclusive leather 3-spoke sports steering wheel with R-DESIGN logo.

Sports gear knob

An illuminated gear knob with perforated leather, gives a performance ready look and feel.

Sports pedals

Racetrack inspired to enhance the driving experience, enjoy the feel of these ridged sports pedals.

Sports floor mats

These black, ribbed and richly tufted sports floor mats set the stage, front and back.

COLOUR YOUR VOLVO. When it comes to the appearance of your Volvo, the choice of exterior colour and wheels are probably your most important design decisions. For more exterior styling options and to build your new Volvo online, please visit www.volvocars.co.za/createyourown



019 Black stone solid



452 Black sapphire metallic (i)



477 Electric silver metallic (i)



484 Seashell metallic



492 Saville grey pearl metallic (i)



498 Caspian blue metallic



612 Passion red solid (ii)



614 Ice white solid (i)



700 Twilight bronze metallic



702 Flamenco red pearl metallic



707 Crystal white pearl metallic (i)



711 Bright silver metallic



712 Rich Java metallic (i)



713 Power blue metallic (i)

(i) Also available for **REDESIGN**

(ii) **REDESIGN** only

Please note: It's not possible to reproduce exact original shades in printed matter. Please ask your dealer to show you samples.

CLEAN COLOURS To reduce usage of environmentally hazardous solvents all Volvo exterior colours are water-based. What's more, our painting facilities are among the cleanest in the world.





EXTERIOR DESIGN Aluminium wheels



17" Valder



18" Pan



18" Zephyrus



18" Ixion II (REDESIGN only)



19" Fenrir (black chrome)



20" Ixion II (REDESIGN only)



20" Titania



20" Avior



20" Cratus (REDESIGN only)

BESPOKE TAILORING FROM VOLVO. The finest fabrics, superb stitching and minute attention to detail – whichever interior you choose for your Volvo XC60, you'll be surrounded by luxury. How will you tailor yours?

NB It is not possible to reproduce exact original shades in printed matter.



G701



G761



G361



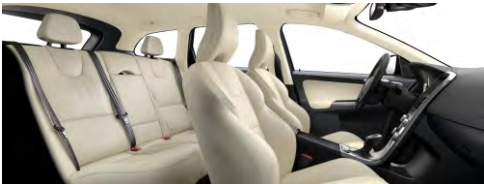
G36B



G70B



G71T



G30B



GT60 (R-DESIGN)



G76B



G301



G31T

Code	Description	Interior colour	Upholstery colour	Dashboard top	Door panel, lower dashboard, & upper tunnel console	Carpet & lower tunnel console	Door panel insert colour	Headliner colour
Standard leather								
G701	Off Black	Anthracite Black	Off Black	Off Black	Off Black	Off Black	Off Black	Quartz
G70B	Soft Beige	Anthracite Black	Soft Beige	Off Black	Off Black	Off Black	Soft Beige	Soft Beige
G76B	Soft Beige	Anthracite Black	Soft Beige	Off Black	Off Black	Off Black	Soft Beige	Charcoal
G761	Off Black	Anthracite Black	Off Black	Off Black	Off Black	Off Black	Off Black	Charcoal
G71T	Soft Beige	Sandstone Beige	Soft Beige	Off Black	Soft Beige	Soft Beige	Soft Beige	Soft Beige
Sport leather								
G301	Off Black	Anthracite Black	Off Black	Off Black	Off Black	Off Black	Off Black	Quartz
G361	Off Black	Anthracite Black	Off Black	Off Black	Off Black	Off Black	Off Black	Charcoal
G30B	Soft Beige	Anthracite Black	Soft Beige	Off Black	Off black	Off black	Soft Beige	Soft Beige
G36B	Soft Beige	Anthracite Black	Soft Beige	Off Black	Off Black	Off Black	Soft Beige	Charcoal
G31T	Soft Beige	Sandstone Beige	Soft Beige	Off black	Soft Beige	Soft Beige	Soft Beige	Soft Beige
R-Design Sport leather								
GT60	Off Black	Off Black	Off Black	Off Black	Off Black	Off Black	Off Black	Charcoal

INTERIOR DESIGN



Leather steering wheel, Off black



Leather steering wheel, Off black with Silk metal inlay



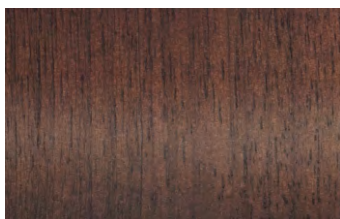
Leather steering wheel, with Urbane wood inlay



Piano black gear knob



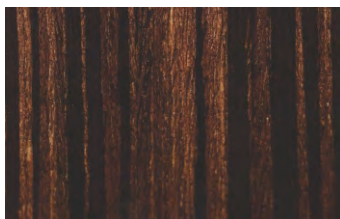
Shimmer graphite inlay



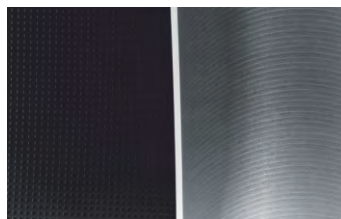
Modern wood inlay



Piano black decor inlay

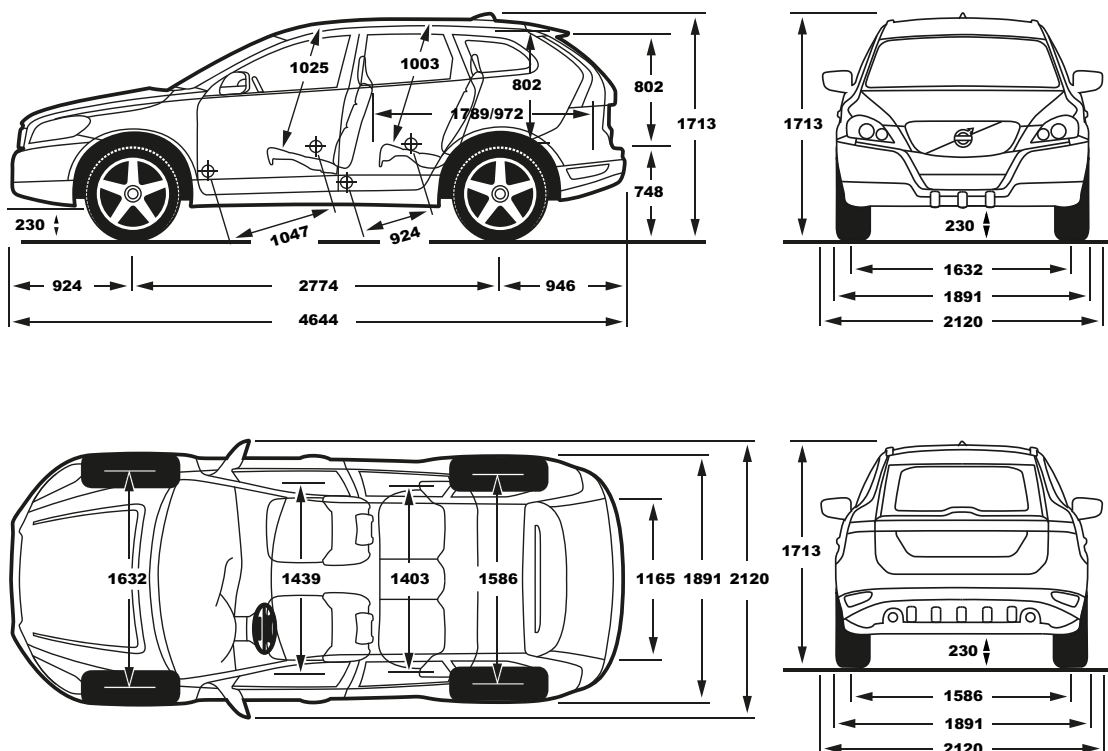


Urbane wood inlay



REDESIGN decor inlay





- (i) The results do not express or imply any guarantee of the fuel consumption of a particular car as there are inevitable differences between individual cars of the same model.
- Additionally, driving style, traffic conditions, as well as the age and mileage and standard of maintenance will affect a car's fuel consumption.
- (ii) The Urban fuel consumption figure is based on typical city driving, including starting the car from cold. The Extra Urban figure is based on typical motorway driving and cruising.
- The Combined figure averages the consumption across both cycles.
- (iii) Unbraked towing weight must not exceed 50% of kerb weight up to a maximum of approximately 750 kg.

Notes

The weight of the vehicle will influence the level of CO₂ emitted. As a result, vehicles with higher levels of specification and factory fit options may emit higher levels of CO₂.

A weighbridge must be used to determine specific weights.
Data valid for manual transmission unless specified.
Gt = Geartronic Automatic Transmission.
All measurements in mm.

The Max. output figures are quoted in PS (Pferdestärke), which is the metric equivalent of brake horsepower.

NB Some of the information in this brochure may not be correct due to product changes which may have occurred since it was printed. Some of the equipment described or shown may now be available only at extra cost. Before ordering, please ask your Volvo dealer for the latest information. The manufacturer reserves the right to make changes at any time, without notice, colour, materials, specifications and models.

Volvo Car South Africa.





IN FINE DETAIL. The nuts and bolts of your Volvo XC60. Whatever you need to know about your new car – whether that's fuel consumption, CO₂ emissions, top speed or boot space – you'll find it here.

ENGINE		T5 FWD Geartronic	D4 FWD Geartronic	D5 AWD Geartronic	T6 FWD Geartronic	T6 AWD Geartronic
Configuration		Transverse – 16 valve	Transverse – 16 valve	Transverse – 20 valve	Transverse – 16 valve	Transverse – 24 valve
Cylinders		4	4	5	4	6
Engine capacity, cc		1969	1969	2400	1969	2953
Bore x stroke, mm		82 x 93.2	81 x 77	81 x 93.15	82 x 93.2	82 x 93.2
Max. output ECE,	PS kW rpm	245 180 5500	181 133 4250	215 158 4000	306 225 5700	329 242 5400-6500
Max. torque ECE,	Nm rpm	350 1500-4800	400 1750-2000	440 1500-3000	400 2100-4500	480 3000-3600
Octane rating		95 RON unleaded	50ppm Diesel	50ppm Diesel	95 RON unleaded	95 RON unleaded
Fuel system		Direct fuel injection	Common rail direct injection	Common rail direct injection	Direct fuel injection	Port fuel injection
Compression ratio		10.8:1	15.8:1	16.5:1	10.3:1	9.3:1

PERFORMANCE		T5 FWD Geartronic	D4 FWD Geartronic	D5 AWD Geartronic	T6 FWD Geartronic	T6 AWD Geartronic
Top speed km/h		210	210	205	210	210
Acceleration 0-100 km/h sec		7.2	8.5	8.3	6.9	6.6
Drag coefficient		0.35	0.35	0.35	0.35	0.35

FUEL CONSUMPTION ⁽ⁱ⁾ ⁽ⁱⁱ⁾		T5 FWD Geartronic	D4 FWD Geartronic	D5 AWD Geartronic	T6 FWD Geartronic	T6 AWD Geartronic
Urban	ℓ /100 km	8.9	5.3	8.5	9.5	15.2
Extra Urban	ℓ /100 km	5.5	4.4	5.3	6.0	8.1
Combined	ℓ /100 km	6.7	4.7	6.4	7.3	10.7
CO ₂ g/km		157	124	169	169	249
Fuel tank capacity	(litres)	70	70	70	70	70



POWER STEERING SYSTEM	ALL MODELS
Turning circle, m (rack and pinion)	11.7

LUGGAGE COMPARTMENT	ALL MODELS
Volume, litres	650
Volume, rear seats down, litres	1450

TRANSMISSION	ALL MODELS
Geartronic (D5, T6 AWD)	6 speed
Geartronic (D4, T5, T6 FWD)	8 speed

BRAKES	ALL MODELS
Front disc diameter, mm	328
Rear disc diameter, mm	302

WEIGHT	T5 FWD Geartronic	D4 FWD Geartronic	D5 AWD Geartronic	T6 FWD Geartronic	T6 AWD Geartronic
Min. kerb weight, kg (actual kerb weight dependent on spec.)	1721	1734	1796	1725	1814
Max. possible towing weight braked, kg	1600	1600	2000	1600	2000
Max. towing weight unbraked, kg (iii)	750	750	750	750	750
Max. towball weight, kg	90	90	90	90	90
Max. total weight, kg	2330	2330	2505	2330	2440
Max. roof load, kg	100	100	100	100	100
Max. payload, kg (dependent on spec.)	609	596	709	605	626

GROUND CLEARANCE	ALL MODELS
Vehicle ground clearance, mm	230
with 2 persons, mm	220
Wading depth, mm	350
Approach angle	22°
Departure angle	27°
Breakover angle	22°



My Volvo

A personalised website for you and your car.

My Volvo gives you:

- News and updates about your car ownership.
- Allows you to follow the main events during the ownership lifetime of your Volvo.
- Easy to reach your dealer for service booking.
- Tips to simplify your everyday life.
- Quick answers to questions about your car.
- Offers that are relevant to you and your car.
- Exclusive articles, films and photographs, plus behind-the-scenes look into the world of Volvo.
- Reminders regarding important stages of car ownership.

Everything you really need to know to get the most out of your Volvo.

On My Volvo, you'll find personalised offers and helpful information, exclusive articles and films, plus all the latest relevant news and updates from Volvo. You can also take advantage of innovative and useful functions, such as Online Service Booking. Everything is easy-to-use, easy-to-find and, most importantly, everything is designed with you and your particular Volvo model in mind.

Sign up at www.volvocars.co.za/myvolvo

The number to call is 0800 698 6586



Tracker Connect

On 1 January 2014, Tracker Connect became Volvo's new roadside assistance partner.

Tracker Connect has been South Africa's leading vehicle tracking company since the 1990s. While vehicle tracking and Stolen Vehicle Recovery (SVR) remains the company's core business, the Tracker of today has evolved into a highly sophisticated technological company offering leading edge fleet management and telematics solutions to both individuals and organisations throughout Southern Africa.

Services include:

- | | |
|---|--|
| • Medical emergency assistance | • Flat tyre assistance |
| • Fuel assistance | • Battery service |
| • Recovery towing | • Overnight accommodation |
| • Emergency transportation | • Accident tow |
| • "Stand by you" roadside security | • Repatriation |
| • Free Mobile app | • In-car Volvo assist button |
| • Web access to conveniently position your vehicle or draw reports which can be used to log and submit business or private usage to SARS. | • Impact detection |
| | • Mileage monitoring |
| | • Volvo Car South Africa branded smartphone app. |

Furthermore, the option to include Proactive Vehicle Recovery for as little as R199* per month is also available. This option also includes access to value added services such as Care, Legal Assist and Theft Rescue.

* Reviewed and adjusted annually.

The number to call is 0800 698 6586

Volvo Car Financial Services

A division of 

Volvo Car Financial Services

has flexible financing options that enable you to structure your deal according to your specific requirements.

We want your experience of buying and owning a Volvo to be enjoyable and hassle free, that is why we have developed the following online service tools:

- Online finance application – apply for finance anytime of the day or and get an instant answer.
- Calculators – calculate your monthly repayments or calculate the value of a vehicle that you could buy based on a specified monthly repayment.
- Account services – manage your account in a secure and user-friendly online environment in real time.

So, remember to insist on Volvo Car Financial Services at your dealer or simply visit www.volvocars.co.za for more information.

All models standard with a 5 year / 100 000km Volvo Plan.

NB Some of the information in this brochure may not be correct due to product changes which may have occurred since it was printed. Before ordering, please ask your Volvo dealer for the latest information. The manufacturer reserves the right to make changes at any time, without notice, to colour, materials, specifications and models.

VOLVOCARS.CO.ZA
VOLVOMADEFORYOU.CO.ZA

VOLVO
XC60

