



Online:
tour.subaru.com/Forester2016

Take a Guided Tour

It's the ultimate way to get to know the Forester on your terms. Get up close and personal with color configurators, videos, 360-views, interactive content and so much more.



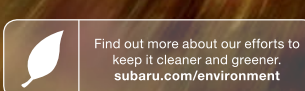
App Store:
tour.subaru.com/Foresterapp



These brochures were printed with vegetable-based inks and produced using a "Green Printing Process". The Forest Stewardship Council® (FSC®) is an international organization that brings people together to find solutions which promote responsible stewardship of the world's forests and environments.

By producing these brochures in a green way rather than by traditional methods, we saved 58 trees preserved for the future; 27,193 gallons of wastewater flow saved; 1,821 lbs solid waste not generated; 5,014 lbs net greenhouse gases prevented; 27,000,000 BTUs energy not consumed. Calculations provided by Environmental Paper Network. FSC® is not responsible for any calculations on saving resources by choosing this paper.

This brochure is printed in the U.S.A. on 10% recycled paper. ©2015 Subaru of America, Inc. 16FOR.SRB.525 (S-17047, 125K, 7/15, CG)



2016

Forester



Love. It's what makes a Subaru, a Subaru.



The Subaru Forester. A whole lot to love.



Do what you love, and do it often.

Introducing the 2016 Subaru Forester

The Forester is all about potential. To do what you enjoy with those closest to you and to be there for those that need you. It's efficient, achieving 32 highway MPG¹; versatile, with standard Subaru Symmetrical All-Wheel Drive; and roomy, with a large cabin and plenty of cargo room. It's safe too, having been named an IIHS Top Safety Pick for nine years running (2007–2015).



Capable

Count on go-anywhere capability with standard Subaru Symmetrical All-Wheel Drive and 32 highway MPG¹. A high 8.7 inches of ground clearance will also get you through especially rough roads, while the available X-MODE[®] featuring Hill Descent Control helps you more easily navigate the steep and the slippery.



Durable

As the longest-lasting compact crossover in America,² you can trust the Forester to last for the long haul. In fact, 96% of Subaru Forester vehicles sold in the last 10 years are still on the road today.²



Safe

In addition to seven standard airbags³, Forester features the available EyeSight[®] Driver Assist Technology⁴, offering added peace of mind and convenience for your daily drive. There are also the all-new STARLINK[™] Safety and Security connected services to help keep you and your Subaru safe and sound.⁵



Connected

Consider yourself connected with the new SUBARU STARLINK[™] in-vehicle technology. It offers hands-free access to nearly unlimited entertainment options, including Pandora,[®] iHeartRadio,[®] STITCHER and Aha.^{™6} It even notifies you on screen when a text comes in and asks if you'd like it read out loud?

1 EPA estimated fuel economy for 2016 Forester 2.5i CVT at 32 highway MPG. Actual mileage may vary. 2 Based on IHS Automotive, Polk U.S. Vehicles in Operation vs. New Vehicle Registrations in the Non-Luxury Compact CUV segment for MY2004–2014 as of September 2014. 3 Always wear seatbelts. Children should be properly restrained in the rear seat. 4 EyeSight is a driver assist technology, which may not operate optimally under all driving conditions. The driver is always responsible for safe and attentive driving. System effectiveness depends on many factors such as vehicle maintenance, weather and road conditions. See Owner's Manual for complete details on system operations and limitations. Please remember to turn off EyeSight when going through a carwash. 5 Activation and required subscription sold separately. Includes one year trial subscription. See your retailer for details. 6 Compatible smartphone and applications required. For applications to operate, latest version of each application is required. Data provided by smartphone is displayed on the audio system screen. Some state laws prohibit the operation of handheld electronic devices while operating a vehicle. Smartphone apps should only be launched when vehicle is safely parked. Your wireless carrier's rates may apply. 7 7" system required.



Forester 2.0XT Touring in Venetian Red Pearl with optional equipment.

A whole lot to love and
much to explore.



Subaru has the Best Resale Value of all
brands for 2015 according to
Kelley Blue Book's KBB.com¹



© 2016 Forester

¹ Vehicle's projected resale value is specific to the 2015 model year. For more information, visit Kelley Blue Book's KBB.com. Kelley Blue Book is a registered trademark of Kelley Blue Book Co., Inc.



Forester 2.5i Touring in Ice Silver Metallic with optional equipment.

Well planned. **Well connected.**



Forester 2.5i Touring with Platinum Leather and optional equipment.

Auto-dimming Mirrors with Approach Light

Make it easier—and safer—to come and go with the accessory Exterior Auto-dimming Mirrors with Approach Light!

When the doors are opened or unlocked with the key fob, LED lights on the side-view mirrors will help light the way, casting light on all four doors and the ground near the vehicle.

They can also help reduce headlight glare in traffic. When the Interior Auto-dimming Rearview Mirror detects excessive light from the rear of the vehicle, the side-view mirrors automatically dim, helping to keep the light out of your eyes. The brighter the light, the dimmer the mirrors and the better you'll be able to see.

1 Exterior Auto-dimming Mirrors with Approach Light are accessory equipment. Requires Interior Auto-dimming Rearview Mirror accessory.



Not Dimmed



Dimmed



Refined Interior

There's a lot to enjoy in the new Forester like an available large panoramic moonroof to give everyone a wide-open feeling and the all-new STARLINK™ Safety & Security connected services that can promptly send first responders when an airbag deploys, help police locate your vehicle if it's stolen, and more! STARLINK™ in-vehicle technology also gives you instant access to music, maps, news and text messages through the touchscreen or voice commands without ever touching your phone?

There's a standard 4.3-inch, full-color multifunction display, with info on vehicle settings as well. A standard Rear-Vision Camera also displays on the audio system screen to help you safely reverse, while the available touchscreen navigation system is there to help you find your way.

1 Activation and required subscription sold separately. Includes one year trial subscription. See retailer for details. 2 Compatible smartphone and applications required. For applications to operate, latest version of each application is required. Data provided by smartphone is displayed on the audio system screen. Some state laws prohibit the operation of handheld electronic devices while operating a vehicle. Smartphone apps should only be launched when vehicle is safely parked. Your wireless carrier's rates may apply.



Lots of room **for lots of possibilities.**



Forester 2.5i Limited with Platinum Leather.

6 | 2016 Forester



An extra set of eyes
every time you drive.

The 2016 Forester is an **IIHS Top Safety Pick**
for nine years running (2007–2015) and a **2015 Top Safety Pick+**
with the optional EyeSight® Driver Assist Technology.

– Insurance Institute for Highway Safety (IIHS)



Pre-Collision Braking



A driver ahead unexpectedly hits the brakes or cuts you off. EyeSight®¹ warns you, applies the brakes, and at lower speeds, can even help you stop your Subaru.

Pre-Collision Throttle Management



If you put the car in Drive instead of Reverse and EyeSight® sees an object in your path, it cuts power to help you avoid accelerating into it.

Adaptive Cruise Control



Traffic doesn't always flow, so EyeSight® doesn't only keep a set speed. The system looks ahead and helps the Subaru automatically adjust to keep your distance, even in stop-and-go highway traffic.

Lane Departure and Sway Warning



You accidentally drift to the edge of your lane and begin to cross into another. EyeSight® watches for lane markers and chimes to warn you before you leave your lane.

¹ EyeSight is a driver assist technology, which may not operate optimally under all driving conditions. The driver is always responsible for safe and attentive driving. System effectiveness depends on many factors such as vehicle maintenance, weather and road conditions. See Owner's Manual for complete details on system operation and limitations. Please remember to turn off EyeSight when going through a carwash.



Information Provided by:
DEALER
E-PROCESS

Forester 2.5i Touring in Ice Silver Metallic with optional equipment.

A turbocharged **taskmaster**.

Forester 2.0XT

Utility with just the right amount of sport, the Forester 2.0XT features a turbocharged, direct-injected SUBARU BOXER® engine with 250 hp and standard Subaru Symmetrical All-Wheel Drive, achieving 28 highway MPG! This advanced engine is mated to a high-torque Lineartronic® CVT with paddle shifters and 6- and 8-speed² manual modes, to help ensure peak MPG, while keeping things fun behind the wheel.

Pumping out that extra rush the way you want it, standard Subaru Intelligent Drive (SI-DRIVE) includes three distinctive performance modes that customize engine response at the push of a button. A large, panoramic moonroof gives everyone aboard a great view of the sky, while its aggressive looks and large 18-inch wheels reveal the fiercer side of the Forester 2.0XT.

1 EPA estimated fuel economy for 2016 Forester 2.0XT at 28 highway MPG. Actual mileage may vary.
2 8-speed manual mode with SI-DRIVE Sport Sharp (S#) setting.



Forester 2.0XT Touring in Ice Silver Metallic with optional equipment.

“Most award-winning small SUV.”¹



“At 32 mpg highway the AWD Forester delivers **better fuel economy** than even some two-wheel-drive competitors.”²

fuelconomy.gov



“The 2016 Subaru Forester received the **highest possible rating** for front crash prevention from IIHS when equipped with Subaru EyeSight®.”

Insurance Institute for Highway Safety (IIHS)



“If you’re seeking out a compact SUV, it’s **hard to beat** what the Forester is peddling.”

AutoTrader.com, 2015 Forester Review



“Competitive fuel economy, a spacious cabin and available turbocharged power make the 2015 Subaru Forester a **solid pick for a small crossover SUV**.”

Edmunds.com, 2015 Forester Review



2016 Forester | Trim Levels



2.5i

- 170-hp 2.5-liter 4-cylinder SUBARU BOXER® engine
- Subaru Symmetrical All-Wheel Drive
- 6-speed manual transmission or optional Lineartronic® CVT
- 17-inch styled steel wheels
- Cloth upholstery
- 6-way manually adjustable driver’s seat. 4-way manually adjustable front-passenger’s seat.
- SUBARU STARLINK™ 6.2" Multimedia in-vehicle technology system with Pandora®, iHeartRadio®, STITCHER and Aha™ smartphone app integration,³ high-resolution LCD touchscreen display, 4 speakers, AM/FM/CD player, HD Radio® with iTunes® tagging capability, USB port/iPod® control, Bluetooth® audio streaming and hands-free phone connectivity, and 3.5-mm auxiliary jack
- Manually adjustable CFC-free air conditioning system with air filtration
- Analog gauges with LCD display
- Enhanced color multifunction display
- Rear-Vision Camera
- 7 airbags



2.5i Premium

Includes 2.5i key features and adds:

- 17-inch aluminum-alloy wheels
- Panoramic moonroof
- Raised roof rails: black finish
- Body-color side mirrors
- 10-way power adjustable driver’s seat
- Reclining rear seatbacks
- SUBARU STARLINK™ 7.0" Multimedia Plus in-vehicle technology system with Pandora®, iHeartRadio®, STITCHER and Aha™ smartphone app integration,³ high-resolution LCD touchscreen display, voice-activated controls, 6 speakers, AM/FM/CD player, HD Radio® with iTunes® tagging capability, USB port/iPod® control, SiriusXM® Satellite Radio,⁴ Bluetooth® audio streaming and hands-free phone and text messaging connectivity, and 3.5-mm auxiliary jack
- STARLINK™ Safety Plus⁵ featuring Automatic Collision Notification, SOS Emergency Assistance, Enhanced Roadside Assistance, Maintenance Notifications and more
- Dual USB ports
- Driver’s auto-up/down power window
- All-Weather Package®
- Privacy glass



2.0XT Premium

Includes 2.5i Premium key features and adds:

- 250-hp turbocharged 2.0-liter 4-cylinder SUBARU BOXER® engine
- Subaru Symmetrical All-Wheel Drive with X-MODE® featuring Hill Descent Control (HDC)
- Lineartronic® CVT (Continuously Variable Transmission) with manual-mode paddle shifters
- Sport-tuned suspension
- SI-DRIVE
- 18-inch aluminum-alloy wheels
- Rear spoiler
- Auto-on/off headlights
- Sport cloth upholstery
- Leather-wrapped steering wheel and shifter handle
- Lineartronic® CVT shift lever with leather shift boot
- Welcome lighting



2.5i Limited

Includes 2.5i Premium key features and adds:

- Subaru Symmetrical All-Wheel Drive with X-MODE® featuring Hill Descent Control (HDC)
- Lineartronic® CVT (Continuously Variable Transmission)
- Fog lights
- Rear spoiler
- Auto-on/off headlights
- Leather-trimmed upholstery
- Automatic climate control system
- Leather-wrapped steering wheel and shifter handle
- Removable cargo-area tray
- Power rear gate with automatic close and height memory
- Welcome lighting



2.5i Touring

Includes 2.5i Limited key features and adds:

- 18-inch aluminum-alloy wheels
- HID headlights
- Chrome accents on lower door cladding
- Body-color side mirrors with integrated turn signals
- Keyless Access with Push-button Start and pin-code vehicle access
- 440-watt Harman Kardon amplifier and 8 Harman Kardon speakers
- Analog gauges with LCD display and electroluminescent lighting
- Dual-zone automatic climate control system
- One-touch folding rear seatbacks
- Lineartronic® CVT shift lever with leather shift boot



2.0XT Touring

Includes 2.5i Touring key features and adds:

- 250-hp turbocharged 2.0-liter 4-cylinder SUBARU BOXER® engine
- Subaru Symmetrical All-Wheel Drive with X-MODE® featuring Hill Descent Control (HDC)
- Lineartronic® CVT (Continuously Variable Transmission) with manual-mode paddle shifters
- Sport-tuned suspension
- SI-DRIVE

¹ Claim based on cumulative awards won since 1997 from *Car and Driver* (5 Best Trucks), ALG (Residual Value Awards), and Polk (Polk Automotive Loyalty Award). ² EPA estimated hwy fuel economy for 2016 Subaru Forester 2.5i CVT models. Actual mileage may vary. ³ Compatible smartphone and applications required. For applications to operate, latest version of each application is required. Data provided by smartphone is displayed on the audio system screen. Some state laws prohibit the operation of handheld electronic devices while operating a vehicle. Smartphone apps should only be launched when vehicle is safely parked. Your wireless carrier’s rates may apply. ⁴ Activation and required monthly subscription sold separately. Includes 4-month trial subscription. See your retailer. ⁵ Activation and required subscription sold separately. Includes one year trial subscription. See retailer for details. ⁶ Standard with manual transmission. Optional with Lineartronic® CVT.

2016 Forester | Specifications

Engine and Drivetrain		2.5i	2.0XT
Engine Power Torque	2.5-liter DOHC aluminum-alloy 16-valve 4-cylinder horizontally opposed SUBARU BOXER® engine with Active Valve Control System. 170 hp @ 5,800 rpm 174 lb-ft @ 4,100 rpm	●	—
	2.0-liter DOHC intercooled, turbocharged aluminum-alloy 16-valve 4-cylinder horizontally opposed SUBARU BOXER® engine with Dual Active Valve Control System. 250 hp @ 5,600 rpm 258 lb-ft @ 2,000-4,800 rpm	—	●
SI-DRIVE performance management system	Subaru Intelligent Drive (SI-DRIVE) enables three distinctively different modes of vehicle performance characteristics by regulating the engine control unit (ECU), the transmission control unit (TCU) and by fine-tuning the electronically controlled throttle.	—	●
Manual Transmission	Fully synchronized 6-speed manual with Incline Start Assist. 2.5i and 2.5i Premium: Standard. 2.5i Limited, 2.5i Touring, 2.0XT Premium and 2.0XT Touring: Not available.	●	—
Automatic Transmission	Lineartronic® CVT (Continuously Variable Transmission) with Adaptive Control, Incline Start Assist and manual mode for 2.0XT models. 2.5i and 2.5i Premium: Optional. 2.5i Limited, 2.5i Touring, 2.0XT Premium and 2.0XT Touring: Standard.	○	●
CA Emissions		PZEV¹	LEV2
Maximum towing capacity	1,500 lbs	●	●
Traction and Stability			
All-Wheel Drive type	Subaru Symmetrical All-Wheel Drive	●	●
X-MODE®	X-MODE® optimizes engine output and transmission ratio, increases all-wheel drive system engagement and uses enhanced control of the VDC system to reduce individual wheelspin, providing optimal traction on low friction surfaces. 2.5i and 2.5i Premium: Not available. 2.5i Limited, 2.5i Touring, 2.0XT Premium and 2.0XT Touring: Standard.	○	●
Hill Descent Control (HDC)	X-MODE® also incorporates Hill Descent Control that helps to maintain a constant vehicle speed when traveling downhill, enhancing vehicle control. 2.5i and 2.5i Premium: Not available. 2.5i Limited, 2.5i Touring, 2.0XT Premium and 2.0XT Touring: Standard.	○	●
Vehicle Dynamics Control (VDC)	Standard VDC electronic stability control utilizes sensors, which constantly monitor wheel speeds, steering angle, brake pressure, vehicle yaw rate and lateral g-forces. If VDC detects a difference between the driver's intended path and the one the vehicle is actually taking, VDC applies braking power and/or reduces engine torque to help correct vehicle path.	●	●
Traction Control System (TCS)	VDC also incorporates an all-wheel, all-speed traction control system, which senses a loss of traction and applies braking force to the slipping wheel or wheels as necessary to maintain vehicle motion.	●	●

2016 Forester | Specifications

Fuel		2.5i	2.0XT
Fuel Economy	city/highway/combined²	Manual: 22/29/25 mpg Automatic: 24/32/27 mpg	23/28/25 mpg
Fuel Requirement		Unleaded gasoline (87 octane)	Premium unleaded gasoline recommended (91 octane. 93 octane for maximum performance.)
Chassis			
Steering	Electric power-assisted rack-and-pinion. Turning circle: 34.8 feet	●	●
Suspension	4-wheel independent. Front: Strut-type with lower L-arm. Stabilizer bar. Rear: Double wishbone. Stabilizer bar. 2.0XT Premium and 2.0XT Touring: Sport-tuned.	●	●
Brakes	4-wheel disc. 4-channel, 4-sensor ABS with Electronic Brake-force Distribution (EBD). 2.5i: Ventilated front. 2.0XT: Ventilated front and rear.	●	●
Brake Discs (front/rear)	2.5i, 2.5i Premium, 2.5i Limited and 2.5i Touring: 11.6 inches/10.8 inches. 2.0XT Premium and 2.0XT Touring: 12.4 inches/10.9 inches.	●	●
Brake Assist	When emergency braking is detected by how quickly the brake pedal is pressed, maximum brake pressure is immediately applied.	●	●
Brake Override System	If both brake and accelerator pedals are pressed simultaneously, the system reduces the operation of the accelerator pedal to help prevent unintentional vehicle acceleration.	●	●
Wheels and Tires			
Wheels	2.5i: 17 x 7.0-inch steel. Alloy Wheel Package: 17 x 7.0-inch 5-spoke aluminum alloy. 2.5i Premium and 2.5i Limited: 17 x 7.0-inch 5-spoke aluminum alloy. 2.5i Touring: 18 x 7.0-inch 5-spoke aluminum alloy. High-luster silver finish.	●	—
	18 x 7.0-inch 5-spoke aluminum alloy. Dark gray with machine finish.	—	●
Tires	2.5i, 2.5i Premium, 2.5i Limited and Alloy Wheel Package: 225/60 R17 98H All-season	●	—
	2.5i Touring, 2.0XT Premium and 2.0XT Touring: 225/55 R18 97H All-season	●	●
Spare Tire	Temporary use T145/80 D17	●	●



2016 Forester | Equipment

Exterior	2.5i	2.5i Premium	2.5i Limited	2.5i Touring	2.0XT Premium	2.0XT Touring
High-intensity discharge (HID) low-beam and multireflector halogen high-beam headlights	—	—	—	●	—	●
Fog lights	□	□	●	●	□	●
Steering-responsive fog lights (when equipped with optional EyeSight®)	—	●	●	●	—	●
Rear spoiler	—	—	●	●	●	●
Black side mirrors	●	—	—	—	—	—
Body-color side mirrors	—	●	●	—	●	—
Body-color side mirrors with integrated turn signals	—	—	—	●	—	●
Chrome accents on lower door cladding	—	—	—	●	—	●
Panoramic moonroof (99% UV light reducing) ³	—	●	●	●	●	●
Windshield wiper de-icer and heated side mirrors (All-Weather Package)	—	○ ⁴	●	●	●	●
Raised roof rails: black finish	○ ⁵	●	●	●	●	●
Seating and Trim						
6-way manually adjustable driver's seat. 4-way manually adjustable front-passenger's seat.	●	—	—	—	—	—
10-way power adjustable driver's seat with power adjustable lumbar support. 4-way manually adjustable front-passenger's seat.	—	●	●	●	●	●
Heated front seats (All-Weather Package)	—	○ ⁴	●	●	●	●
Reclining rear seats	—	●	●	●	●	●
60/40-split flat-folding rear seatbacks	●	●	●	●	●	●
One-touch folding rear seatbacks	—	—	—	●	—	●
Leather-wrapped steering wheel and shifter handle	—	—	●	●	●	●
Lineartronic® CVT shift lever with leather shift boot	—	—	—	●	●	●
Cloth upholstery	●	●	—	—	●	—
Leather-trimmed upholstery	—	—	●	●	—	●
Convenience						
Keyless Access with Push-button Start and pin-code vehicle access	—	—	—	●	—	●
One-touch lane change feature	●	●	●	●	●	●
Auto-on/off headlights	—	—	●	●	●	●
Power rear gate with automatic close and height memory	—	—	●	●	—	●
Driver's auto-up/down power window	○ ⁵	●	●	●	●	●
3-spoke steering wheel with audio system, Bluetooth®, SI-DRIVE (2.0XT only), and cruise control (or if equipped, EyeSight® System Adaptive Cruise Control) buttons	●	●	●	●	●	●
Lineartronic® CVT transmission paddle shifters	—	—	—	—	●	●
Manually adjustable tilt/telescoping steering column	●	●	●	●	●	●
8 cup holders	—	●	●	●	●	●
Center console with detachable storage tray	●	●	●	●	●	●
Rear center armrest	—	●	●	●	●	●
Cargo-area with 2 grocery bag hooks, 4 tiedown hooks and underfloor storage	●	●	●	●	●	●
Removable cargo-area tray	□	□	●	●	□	●
Welcome lighting	—	—	●	●	●	●
Audio and Navigation Systems						
SUBARU STARLINK™ 6.2" Multimedia in-vehicle technology system with Pandora®, iHeartRadio®, STITCHER and Aha™ smartphone app integration ⁶ ; high-resolution LCD touchscreen display, 4 speakers, AM/FM/CD player, HD Radio® with iTunes® tagging capability, USB port/iPod® control, Bluetooth® audio streaming and hands-free phone connectivity, and 3.5-mm auxiliary jack	●	—	—	—	—	—
SUBARU STARLINK™ 7.0" Multimedia Plus in-vehicle technology system with Pandora®, iHeartRadio®, STITCHER and Aha™ smartphone app integration ⁶ ; high-resolution LCD touchscreen display, voice-activated controls, AM/FM/CD player, HD Radio® with iTunes® tagging capability, USB port/iPod® control, SiriusXM® Satellite Radio ⁷ ; Bluetooth® audio streaming and hands-free phone and text messaging connectivity, and 3.5-mm auxiliary jack	—	●	●	●	●	●
6 speakers	—	●	●	—	●	—
Harman Kardon speaker system with 8 speakers and 440-watt amplifier	—	—	○ ⁵	●	—	●

● Standard ○ Optional — Not equipped □ Available retailer-installed accessory

2016 Forester | Equipment

Climate Control	2.5i	2.5i Premium	2.5i Limited	2.5i Touring	2.0XT Premium	2.0XT Touring
Manually adjustable CFC-free air conditioning system with air filtration	●	●	—	—	●	—
Automatic climate control system with air filtration	—	—	●	—	—	—
Dual-zone automatic climate control system with air filtration	—	—	—	●	—	●
Instrumentation						
Analog gauges with LCD display	●	●	●	—	●	—
Analog gauges with LCD display and electroluminescent lighting	—	—	—	●	—	●
Enhanced color multifunction display for driving range, average fuel economy, clock, ambient temperature, climate control and other vehicle functions	●	●	●	●	●	●
Security						
Keyless entry system with answer-back electronic chirp	●	●	●	●	●	●
Antitheft security system with engine immobilizer	●	●	●	●	●	●
Safety						
ACTIVE						
Subaru Symmetrical All-Wheel Drive (AWD)	●	●	●	●	●	●
Vehicle Dynamics Control (VDC) with Traction Control System (TCS)	●	●	●	●	●	●
4-wheel antilock braking system (ABS) with Electronic Brake-force Distribution (EBD)	●	●	●	●	●	●
Brake Assist	●	●	●	●	●	●
Brake Override System	●	●	●	●	●	●
Daytime Running Lights (DRL)	●	●	●	●	●	●
EyeSight® Driver Assist Technology ^{5,8}	—	○	○	○	—	○
STARLINK™ Safety Plus ⁹ : Automatic Collision Notification, SOS Emergency Assistance, Enhanced Roadside Assistance, Maintenance Notifications, Monthly Vehicle Health Report, Diagnostic Alerts	—	●	●	●	●	●
Rear-Vision Camera	●	●	●	●	●	●
PASSIVE						
Subaru advanced frontal airbag system with driver's and front-passenger's airbags (SRS) ¹⁰	●	●	●	●	●	●
Seat-mounted front side-impact airbags (SRS) ¹⁰	●	●	●	●	●	●
Side-curtain airbags protecting front and rear outboard occupants (SRS) ¹⁰	●	●	●	●	●	●
Rollover sensor (SRS) ¹⁰	●	●	●	●	●	●
Driver's side knee airbag (SRS) ¹⁰	●	●	●	●	●	●
Whiplash-protection front seats with height-adjustable head restraints	●	●	●	●	●	●
Height-adjustable 3-point front seatbelts with pretensioners and force limiters. 3-point seatbelts at all rear seating positions.	●	●	●	●	●	●
Rear child-safety door locks	●	●	●	●	●	●
LATCH system: Lower Anchors and Tethers for Children	●	●	●	●	●	●
Optional Equipment						
STARLINK™ Safety Plus & Security Plus ⁹	—	○	○	○	○	○
Lineartronic® CVT (Continuously Variable Transmission)	○	○	●	●	●	●
Alloy Wheel Package • Lineartronic® CVT	○	—	—	—	—	—
All-Weather Package • Lineartronic® CVT	—	○	●	●	●	●
All-Weather Package • Lineartronic® CVT • EyeSight® Driver Assist Technology ⁸	—	○	—	—	—	—
All-Weather Package • Lineartronic® CVT • EyeSight® Driver Assist Technology ⁸ • SUBARU STARLINK™ 7.0" Multimedia Navigation System	—	○	—	—	—	—
SUBARU STARLINK™ 7.0" Multimedia Navigation System • Harman Kardon speaker system	—	—	○	—	—	—
SUBARU STARLINK™ 7.0" Multimedia Navigation System • Harman Kardon speaker system • EyeSight® Driver Assist Technology ⁸	—	—	○	—	—	—
SUBARU STARLINK™ 7.0" Multimedia Navigation System • EyeSight® Driver Assist Technology ⁸	—	—	—	○	—	○

EQUIPMENT CONTENTS

SUBARU STARLINK™ 7.0" Multimedia Navigation System: Voice-activated 7-inch multi-touch gesture high-resolution GPS navigation system with SiriusXM® Satellite Radio,⁷ NavTraffic^{®7}, NavWeather,^{®7} USB port/iPod® control, Bluetooth® audio streaming, voice-activated controls, hands-free phone and text messaging connectivity, 3.5-mm auxiliary jack and Pandora®, iHeartRadio®, STITCHER and Aha™ smartphone app integration.⁶Voice activation for Navigation, Phone and Audio System

EyeSight® Driver Assist Technology⁸: Pre-Collision Braking System, Pre-Collision Throttle Management, Lane Departure and Sway Warning, Adaptive Cruise Control

STARLINK™ Safety Plus & Security Plus⁹: Includes STARLINK™ Safety Plus features and adds Stolen Vehicle Recovery, Remote Lock/Unlock, Remote Horn & Lights, Remote Vehicle Locator, and Vehicle Security Alarm Notification

All-Weather Package: Windshield wiper de-icer, heated side mirrors and heated front seats

Alloy Wheel Package: 17-inch alloy wheels, raised roof rails and driver's auto-up/down power window





Heavy-duty Roof Cargo Basket. Mounts to vehicles with standard roof rails and is compatible with most genuine Subaru roof carriers for bikes, kayaks, skis and cargo carriers. Not applicable to vehicles with Fixed Cross Bar Set. Aero cross bars shown with heavy-duty roof cargo basket.



Rear Seatback Protector. Provides additional protection to the rear seatbacks when lowering the seats to transport larger cargo. Use in conjunction with a Rear Cargo Tray.



Body Side Moldings. Color-matched moldings help protect vehicle doors from parking lot dings, while attractively blending with the lines of the car.



Trailer Hitch. Rated at 176 lbs tongue weight with 1,500 lbs of towing capacity. Engineered to the same rigorous standards as the rest of the Forester. Hitch Ball not included. Trailer brakes may be needed.



Fog Light Kit. Casts a low and wide beam of light to enhance vision in inclement weather.



Side Window Deflectors. Let the fresh air in while helping to keep the weather out. Black acrylic plastic construction is designed specifically for an exact fit. May not be legal in all states. Please check your state laws.



Splash Guards. Help protect the vehicle's paint finish from stones and road grime.



Remote Engine Starter. Allows vehicle to be started by pushing a button from the convenience of home or office (up to 400 feet away depending on obstructions) so that the vehicle interior is more comfortable upon entry. The start/stop button blinks to confirm the engine has started. A/T only.



Cargo Tray. Tough, durable tray helps protect cargo area. Can be easily removed and rinsed clean.



Moonroof Air Deflector. Helps reduce wind noise and sun glare when moonroof is open. Cannot be used in conjunction with the Extended Roof Cargo Carrier.



Rear Bumper Cover. Helps protect the upper surface of painted rear bumper from scratches and dings.



Remote Engine Starter—Smart Engine Start. Allows the vehicle to be started at the push of a button from outside the vehicle. Preset the heating or air conditioner controls to help bring the interior temperature to a more comfortable level prior to entry. Smart Engine Start works in conjunction with the Keyless Access with Push-button Start system. Operating distance is up to 30 feet depending on obstructions. A/T only.

Protecting Your Investment

Once you're part of our family, we'll be there for you. Every Subaru comes with 24-hour roadside assistance for 3 years or 36,000 miles. If you have trouble on the road, a tow to the nearest Subaru retailer and other services are just a phone call away. And to protect you over the long haul, we offer Added Security®...ask for it by name—extended service agreements and maintenance plans that will help protect your car for up to 7 years or 100,000 miles. They're the only mechanical and maintenance plans backed by Subaru, and because we've been backing them for more than 30 years, they're agreements you can trust. Your retailer has full coverage details.



Subaru Badge of Ownership

True commitment shows through. For Subaru owners, it shows in kayak scuffs and snowboard scratches. It can take the form of dog hair that just won't come out, fresh coats of dust, or extra coats of wax. For many, the Subaru Badge of Ownership lets them show their commitment to the life they live and the confidence that has inspired them to fully embrace it. Owners can order badges online for free, stick them on, and let everyone know how they experience the world. Which one will you get?



Durability



Responsible. Reliable. Ready to join the family.

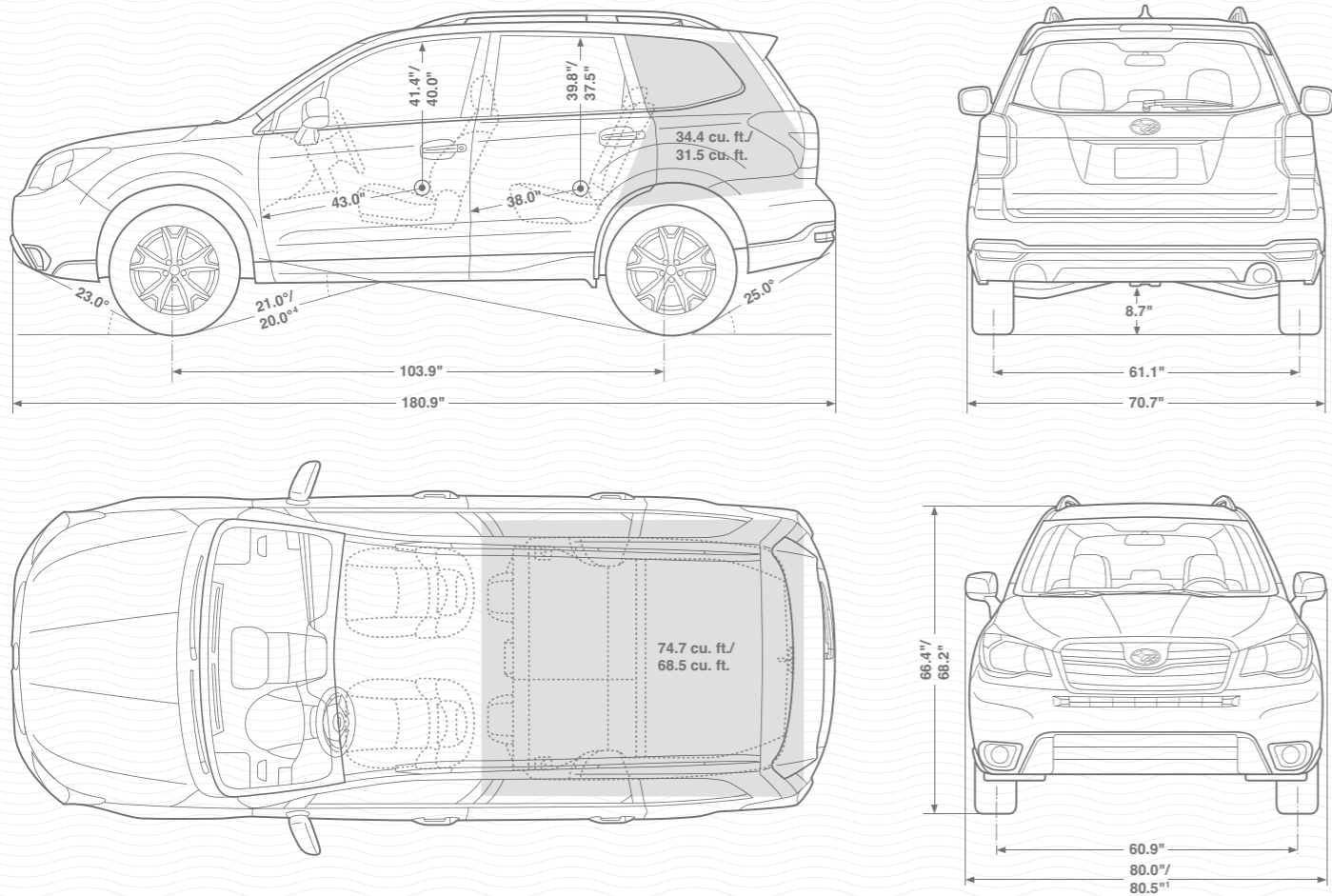
At Subaru, we're committed to building a lasting, rewarding relationship with you and the world we share. We start by building our vehicles to last—it's why 96% of all the Subaru Forester vehicles sold in the last 10 years are still on the road today.¹¹ We also share your desire for a cleaner, greener world. Every 2016 non-turbo Forester achieves Partial Zero Emission Vehicle—PZEV¹—status, because of its exceptionally low emissions. What's more, in 2004, Subaru of Indiana Automotive, Inc., (SIA) became the first manufacturing facility in the U.S. to reach zero-landfill status—nothing from its manufacturing efforts ever goes into a landfill. Subaru is headquartered in a zero-landfill office in Cherry Hill, NJ.

Warranties

New Car Limited Warranty	3 years or 36,000 miles, whichever comes first.
Powertrain Limited Warranty	5 years or 60,000 miles, whichever comes first.
Wear Item Limited Warranty	3 years or 36,000 miles, whichever comes first. Repairs to the following items will also be covered under Wear Item Limited Warranty: <ul style="list-style-type: none">• Brake Pads• Wiper Blades• Clutch Linings• Transmitter Batteries
Rust Perforation Limited Warranty	5 years, unlimited mileage.
24-hour Roadside Assistance	3 years or 36,000 miles, whichever comes first.

1 2016 Subaru Forester 2.5L models achieving a Partial Zero Emission Vehicle (PZEV) rating by the California Air Resources Board are available in all 50 states. Only those registered in California, Connecticut, Maine, Maryland, Massachusetts, New Jersey, New York, Rhode Island and Vermont will be eligible for the 15 years/150,000 mile emission warranty. Delaware, Oregon, Pennsylvania and Washington vehicles are not covered under PZEV emissions control warranty. See your warranty maintenance booklet for additional information. 2 2016 EPA fuel economy estimates. Actual mileage may vary. 3 The glass information listed represents calculated reference values, and may not represent actual values determined by testing. 4 Standard with manual transmission. Optional with Lineartronic® CVT. 5 Available only with other features. See Optional Equipment listing. 6 Compatible smartphone and applications required. For applications to operate, latest version of each application is required. Data provided by smartphone is displayed on the audio system screen. Some state laws prohibit the operation of handheld electronic devices while operating a vehicle. Smartphone apps should only be launched when vehicle is safely parked. Your wireless carrier's rates may apply. 7 Activation and required monthly subscription sold separately. Includes 4-month trial subscription. See your retailer. 8 EyeSight not available with Crystal Black Silica exterior color. EyeSight is a driver assist technology, which may not operate optimally under all driving conditions. The driver is always responsible for safe and attentive driving. System effectiveness depends on many factors such as vehicle maintenance, weather and road conditions. The Pre-Collision Braking System is designed to provide automatic braking that either prevents a collision or reduces the severity of a frontal impact. The Pre-Collision Throttle Management System is designed to reduce acceleration and minimize the severity of certain frontal impacts. Adaptive Cruise Control and Brake Light Recognition are designed to assist the driver and are not substitutes for safe and attentive driving. The Lane Departure and Sway Warning operates only when the lane markings are visible and its effectiveness depends on many factors. See Owner's Manual for complete details on system operations and limitations. Please remember to turn off EyeSight when going through a carwash. 9 Activation and required subscription sold separately. Includes one year trial subscription. See retailer for details. 10 The Supplemental Restraint System (SRS) (airbags) affords the driver and the front and rear outboard passengers additional protection in moderate to severe frontal and side-impact collisions. This system provides supplemental protection only, and seatbelts must be worn in order to avoid injuries to out-of-position occupants upon airbag deployment and to provide the best combined protection in a serious accident. Children should always be properly restrained in the rear seat. 11 Based on IHS Automotive, Polk U.S. Vehicles in Operation vs. New Vehicle Registrations in the Non-Luxury Compact CUV segment for MY2004–2014 as of September 2014.

2016 Forester | Dimensions



Length/Width/Height	180.9 inches/70.7 inches (80.0 inches/80.5 inches ¹ with side mirrors)/68.2 inches with roof rails (66.4 inches without roof rails)	Headroom (front/rear)	40.0 inches/37.5 inches (without moonroof: 41.4 inches/39.8 inches)
Wheelbase	103.9 inches	Legroom (front/rear)	43.0 inches/38.0 inches
Track (front/rear)	60.9 inches/61.1 inches	Shoulder room (front/rear)	57.0 inches/56.5 inches
		Hip room (front/rear)	53.9 inches/53.0 inches
Base curb weight (manual/automatic)	2.5i: 3,296 lbs/3,366 lbs 2.5i Premium: 3,318 lbs/3,391 lbs 2.5i Limited: N/A/3,419 lbs 2.5i Touring: N/A/3,444 lbs 2.0XT Premium: N/A/3,624 lbs 2.0XT Touring: N/A/3,651 lbs	Passenger volume	103.3 cubic feet (without moonroof: 108.3 cubic feet)
		Cargo volume	31.5 cubic feet (without moonroof: 34.4 cubic feet)
		Maximum cargo volume	68.5 cubic feet with rear seat lowered (without moonroof: 74.7 cubic feet)

With integrated turn signals.

Some images shown are for illustration purposes only. Specifications in this brochure are based on the latest product information available at the time of publication. For the most up-to-date and detailed product information, log on to www.subaru.com. Some equipment shown in photography in this brochure is optional at extra cost. Specific options may be available only in combination with other options. Specific combinations of equipment or features may vary from time to time and by geographic area. Certain accessories and equipment may not be available at the time of publication. Subaru of America, Inc., reserves the right to change or discontinue at any time, without notice, prices, colors, materials, equipment, accessories, specifications, models and packages without incurring any obligation to make the same or similar changes on vehicles previously sold. Colors shown may vary due to reproduction and printing processes.

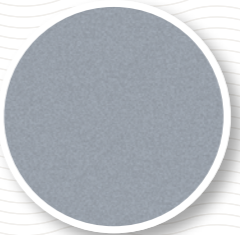
This brochure was prepared by Subaru of America, Inc. A warranty from Subaru of America, Inc., is available only on cars sold to the first retail purchaser through an authorized Subaru retailer in the continental U.S. or Alaska. Every owner of the car during the warranty period shall be entitled to the benefit of these warranties. Subaru, SUBARU BOXER, Lineartronic, Added Security and Forester are registered trademarks. Confidence in Motion and STARLINK are trademarks of Fuji Heavy Industries, Ltd. EyeSight and X-MODE are registered trademarks of Fuji Heavy Industries, Ltd. Harman Kardon is a registered trademark of Harman International Industries, Incorporated. Aha is a trademark of Harman International Industries, Incorporated. Bluetooth is a registered trademark of Bluetooth SIG, Inc. HD Radio is a registered trademark of iBiquity Digital Corporation. HomeLink is a registered trademark of Prince Corporation, a wholly owned subsidiary of Johnson Controls. Apple, iPod and iTunes are registered trademarks of Apple Inc. App Store is a service mark of Apple Inc. Google Play and Android are trademarks of Google Inc. SiriusXM, NavTraffic and NavWeather are registered trademarks of SiriusXM Radio Inc. iHeartRadio is a registered trademark of Clear Channel Communications, Inc. Pandora is a registered trademark of Pandora Media, Inc. STITCHER is a trademark of Stitcher, Inc. For more information, contact your Subaru retailer or log on to www.subaru.com.

2016 Forester | Colors

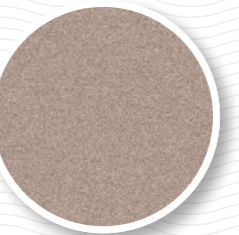
Paint



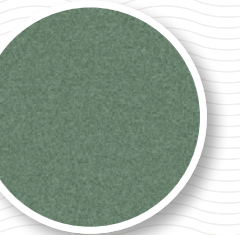
Crystal White Pearl



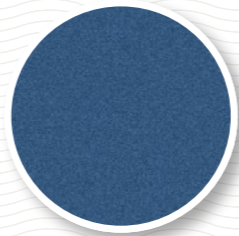
Ice Silver Metallic



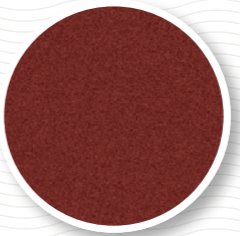
Burnished Bronze Metallic



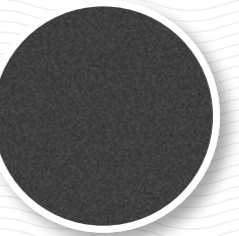
Jasmine Green Metallic



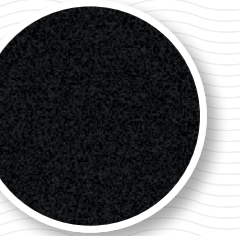
Quartz Blue Pearl



Venetian Red Pearl



Dark Gray Metallic



Crystal Black Silica

Upholstery



Black Cloth (BC)



Platinum Cloth (PC)



Black Cloth with Sport Bolsters (BCSB)



Black Leather (BL)



Platinum Leather (PL)

Color Combinations

	2.5i	2.5i Premium	2.5i Limited	2.5i Touring	2.0XT Premium	2.0XT Touring
Crystal White Pearl	PC	PC	PL	PL	BCSB	BL
Ice Silver Metallic	BC or PC	BC or PC	BL or PL	BL or PL	BCSB	BL
Burnished Bronze Metallic	BC	BC	BL	BL	—	—
Jasmine Green Metallic	PC	PC	PL	PL	—	—
Quartz Blue Pearl	PC	PC	PL	PL	BCSB	BL
Venetian Red Pearl	PC	PC	PL	PL	BCSB	BL
Dark Gray Metallic	PC	PC	PL	PL	BCSB	BL
Crystal Black Silica ⁸	BC	BC	BL	BL	BCSB	BL

— Not available

Information Provided by:

