



2015
FIESTA+ST



Go Further

Full throttle.
Every day.



Click to see why Fiesta
is a non-stop blast.



ST. Molten Orange Tri-coat Metallic. Available equipment.



Information Provided by:
DEALER
E-PROCESS

2015 **FIESTA+ST**
ford.com



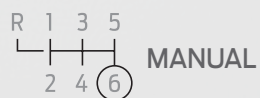
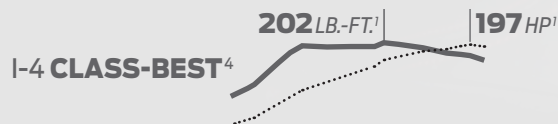
Enthusiasts, take your seat.

The driver's seat, of course. Then place your hand on the leather-wrapped shift knob. Of the standard 6-speed *manual* transmission. That's linked to a turbocharged high-output 1.6L EcoBoost® I-4 with 197 horsepower.¹ It's time to party – Fiesta ST style.

"It's a bullet on the road," says *AUTOMOBILE Magazine*, which named Fiesta ST one of its 2014 All-Stars. An "overboost" feature can extend peak torque for up to 17 seconds. Sport-suspension architecture with European-inspired tuning and 17" summer-compound performance tires² help keep it planted.

Gripped firmly by the supportive bolsters of the RECARO® partial leather-trimmed seats,³ you'll enjoy the amplified engine sounds from EcoBoost that are piped into the cabin through the sound symposer. Or the resounding boom of the 8-speaker Audio System from Sony® with HD Radio™ Technology.

"It begs to be flogged on every on-ramp and stabbed at every downtown red-to-green," says *Road & Track*. "In the process, Fiesta ST invites a hell of a grin." Behind this wheel, the rush is always on.



ST, ST RECARO Package. Available equipment.

¹Using 93-octane fuel. ²Ford does not recommend using summer tires when temperatures drop to approximately 40°F or below (depending on tire wear and environmental conditions) or in snow/ice conditions. If the vehicle must be driven in these conditions, Ford recommends using all-season or snow tires. ³Available feature. ⁴Horsepower and torque, Class is High Performance Subcompact Manual Cars.



2015 **FIESTA+ST**
ford.com



Efficiency experts, applaud now.

We're all trying to squeeze every last mile from a gallon of gas. That's why starting with an efficient foundation is key. Enter Ford Fiesta.

Fiesta SE has an EPA-estimated rating of 43 hwy mpg¹ when equipped with the SE EcoBoost® Fuel Economy Package. Along with unique wheels, the package includes the new 1.0L EcoBoost I-3 engine that combines direct fuel injection, turbocharging and twin independent variable camshaft timing (Ti-VCT).



With an impressive 123 horsepower and 125 lb.-ft. of torque, the 1.0L EcoBoost isn't shy about performance. "The Fiesta pulls with a diesel-like sense of authority, regardless of gear or engine speed, and had little difficulty when it came to on-ramps or highway merging, where power is most likely to be needed," says autoblog.com. "This powertrain is just very, very easy to drive." More proof that big ideas do come in unexpected packages. Just like the 2015 Ford Fiesta.



EPA-ESTIMATED RATING  **43 HWY MPG¹**

DIRECT  INJECTION²

125 LB.-FT. **123 HP**

A line graph showing torque and horsepower curves. The solid line represents torque, peaking at 125 lb.-ft. The dotted line represents horsepower, peaking at 123 HP.

SE, SE EcoBoost Fuel Economy Package, Magnetic. Available equipment.

¹EPA-estimated rating: 31 city/43 hwy/36 combined mpg, 1.0L EcoBoost I-3. Actual mileage will vary. ²Available feature.



Information Provided by:
DEALER
E-PROCESS

2015 **FIESTA+ST**
ford.com



Go Further



Tour the
Fiesta gallery



Drivers, keep smiling.

In Fiesta, every drive can bring a grin. Dart in and out of traffic. Stick it in the corners. And draw admiring glances along the way.

To help Fiesta stay sure-footed in the corners, standard Torque Vectoring Control applies slight braking force (as needed) to the inside front wheel to help more torque reach the road and keep Fiesta firmly planted.

For that extra-connected feel, the PowerShift 6-speed automatic transmission¹ helps provide torque to the front wheels 100% of the time during shifts. Electric power-assisted steering improves steering feel at low speeds and provides precise assist on the highway. Specially tuned shocks and spring rates balance responsive handling with the need for a smooth ride. Choose your favorite 15" or 16" wheels.¹ Then go.



2015 **FIESTA+ST**
ford.com



Information Provided by:
DEALER
E-PROCESS

¹Available feature.



Multitaskers, just say the word.

Stay connected in Fiesta with standard voice-activated Ford SYNC®¹ with 911 Assist®, which delivers hands-free calls, Bluetooth®-streaming music and more with simple voice commands.

Once paired, it can download contacts and play music from your smartphone. It can also access your MP3 player, USB or iPod®.

Just push a button on the steering wheel and say things like "Call: Heather at home" or "Play playlist: Road Jams."

Control apps by voice too, such as Pandora®, iHeartAuto™ and SiriusXM® with SYNC AppLink.™² Take your connections to the next level in Fiesta. SYNC. Say the word.

| SYNC

Titanium. Medium Light Stone leather trim. Available equipment.

Information Provided by:

¹Driving while distracted can result in loss of vehicle control. Only use mobile phones and other devices, even with voice commands, when it is safe to do so. Not all features are compatible with all phones.

²SYNC AppLink is available on select models and compatible with select smartphone platforms. AppLink is not compatible with MyFord Touch.™ Commands may vary by phone and AppLink software.

2015 **FIESTA+ST**
ford.com





Innovators, have fun.

SYNC^{®1} with MyFord Touch^{®1} makes it easy. Colorful graphics, fast touch-screen responses and simple controls give you voice and touch mastery of your phone, entertainment, and navigation.²

Answer a call from your paired phone by pressing accept on the 6.5" color LCD touch screen. Incoming text? Have the system read it aloud for you. Hear a new favorite tune over the radio? With HD Radio[™] Technology² and iTunes[®] tagging, simply touch the TAG shopping cart icon when the song is playing to mark it for purchase later.

SiriusXM^{®2} lets you enjoy commercial-free music, plus sports, news, entertainment, and every premium channel with your 6-month All Access trial subscription.³ The voice-activated Navigation System² also includes a 5-year subscription to SiriusXM Traffic and Travel Link[®] services. These features provide detailed traffic information on accidents, construction and road closures, plus local and national weather forecasts, fuel prices and more.



Titanium. Medium Light Stone leather trim. Available equipment.



2015 **FIESTA+ST**
ford.com



¹Available feature. Driving while distracted can result in loss of vehicle control. Only use SYNC/MyFord Touch/other devices, even with voice commands, when it is safe to do so. Some features may be locked out while the vehicle is in gear. Not all features are compatible with all phones. ²Available feature. ³Trial subscription also includes access to SiriusXM Internet Radio on your computer, smartphone or tablet. Satellite and Internet Radio lineups vary slightly.

Visitors, stay awhile.

Pull up in Fiesta and people will notice. They'll be even more impressed when they climb in.

Enter and start Fiesta – without using a key. With its Intelligent Access key fob¹ in your pocket, just touch the door handle and you're in. Then, press the brake pedal and push the start button. Keep your paired smartphone close (and charging¹) in the full center console with padded armrest.¹

Heat your front seats¹ in cloth or leather trim.¹ They're sport bolstered for support. Cool things down with electronic automatic temperature control,¹ which automatically maintains settings chosen by the driver or front passenger. Rock the house with the 8-speaker Audio System from Sony.^{®1} In the rear, open up additional cargo room by folding down one or both sides of the 60/40 split rear seat.

PUSH-BUTTON



START¹

AUDIO SYSTEM



FROM SONY¹

HEATED



FRONT SEATS¹

Titanium. Charcoal Black leather trim. Available equipment.

¹Available feature.



Information Provided by:

DEALER
E-PROCESS

2015 **FIESTA+ST**
ford.com





Safety, for all.

Layer for protection. It's good advice that still applies today. Underneath the aerodynamic shape of the 2015 Fiesta, there are many protective layers.

Learn more about safety



Strength surrounds you in the form of a rigid safety cage. High-strength and ultra-high-strength boron steel work with SPACE (Side Protection And Cabin Enhancement) Architecture to help divert crash forces away from occupants. Next, 7 standard airbags include: driver and front-passenger front; driver's knee; front-seat side; and side curtains.

Underpinning it all, AdvanceTrac® electronic stability control automatically helps avoid skidding and fishtailing, helping keep all 4 wheels firmly planted.¹



2015 **FIESTA+ST**
ford.com



Information Provided by:

DEALER

¹Remember that even advanced technology cannot overcome the laws of physics. It's always possible to lose control of a vehicle due to inappropriate driver input for the conditions.

SE. Ruby Red Tinted Clearcoat Metallic. Full body-styling kit. Available equipment.



Compare to
other vehicles



Believers, make it your own.

You've seen how much Fiesta has to offer. Now here's how you can make it your own.

Let sun and breeze stream in through the power moonroof.¹ See what's behind your vehicle as you slowly back up, thanks to a convenient rear view camera.^{1,2} Even heat your front seats¹ (in cloth or leather).

Choose your color with ambient lighting.¹ With MyKey,^{®1} set speed and volume controls for when others are driving your Fiesta.

Never leave your gas cap behind with the Easy Fuel[®] capless fuel filler. You don't need one. With its long list of standard and available features, your 2015 Fiesta can be just the way you want it.

¹Available feature. ²Driver-assist features are supplemental and do not replace the driver's judgment.



2015 **FIESTA+ST**
ford.com



Fiesta Specifications



Engines/EPA-Estimated Ratings & Dimensions

1.6L Ti-VCT I-4 120 hp @ 6,350 rpm 112 lb.-ft. of torque @ 5,000 rpm 5-speed manual 28 city/36 hwy/31 combined mpg PowerShift 6-speed automatic 27 city/37 hwy/31 combined mpg	Exterior Wheelbase 98.0" Length 173.5"/159.7"/160.1" Height 58.1"/58.1"/57.2" Width – Mirrors folded 71.6" Width – Including mirrors 77.8"	Sedan/Hatchback/ST
1.0L EcoBoost® I-3 123 hp @ 6,000 rpm 125 lb.-ft. of torque @ 2,500 rpm SE EcoBoost Fuel Economy Package with 5-speed manual 31 city/43 hwy/36 combined mpg	Interior Head room – Front 39.1" Head room – Rear 37.1"/37.2"/37.2" Shoulder room – Front 52.7" Shoulder room – Rear 49.0" Hip room – Front 50.6" Hip room – Rear 49.2" Leg room – Front 43.6" Leg room – Rear 31.2"	
1.6L EcoBoost I-4 197 hp @ 6,000 rpm ¹ 202 lb.-ft. of torque @ 4,200 rpm ¹ 6-speed manual 26 city/35 hwy/29 combined mpg	Capacities (cu. ft.) Passenger volume 85.1 Luggage capacity (sedan) 12.8 Cargo volume behind front seats (hatchback/ST) 25.4 Cargo volume behind rear seats (hatchback/ST) 14.9/10.1 Fuel tank (gal.) 12.4	

Dimensions may vary by trim level.
¹Using 93-octane fuel. ²Always wear your safety belt and secure children in the rear seat.

Standard Features

Mechanical Anti-Lock Brake System (ABS) Easy Fuel® capless fuel filler Electric power-assisted steering (EPAS) Front-wheel drive (FWD) Suspension – Front: independent MacPherson strut Suspension – Rear: non-independent twist-beam	Safety & Security Personal Safety System™ for driver and front passenger includes dual-stage front airbags ² ; safety belt pretensioners, safety belt energy-management retractors, safety belt usage sensors, driver's seat position sensor, crash severity sensor, restraint control module and Front-Passenger Sensing System AdvanceTrac® electronic stability control and hill start assist Belt-Minder® front safety belt reminder Child-safety rear door locks Driver's knee airbag ² Front-seat side airbags ² SecuriLock® Passive Anti-Theft System Side-curtain airbags ² SOS Post-Crash Alert System™ Tire Pressure Monitoring System (excludes spare)
Seating 6-way manual driver's seat 4-way manual front-passenger seat 60/40 split-fold rear seat	
Interior 12-volt front powerpoint Air conditioning Bottle/cupholders (5 front, 1 rear) Driveaway auto door locks Front carpeted floor mats Front doors with map pocket and cupholder Front-passenger seat back map pocket Power door locks Rear climate vents Tilt/telescoping steering column	
Exterior Acoustic-laminate solar-tinted glass Body-color door handles Quad-beam halogen headlamps Rear-window defroster Rear-window wiper with washer (hatchback) Windshield wipers – Intermittent	





SE Sedan. Tuxedo Black. Available equipment. SE Hatchback. Ruby Red Tinted Clearcoat Metallic. SE Appearance Package. Available equipment.

SE. Medium Light Stone cloth seats with Medium Light Stone inserts.

Steering wheel-mounted audio and SYNC controls.

SYNC voice-activated, in-vehicle connectivity system.

S Sedan/Hatchback

Equipment Group 100A
Includes all standard features, plus:

Mechanical

1.6L Ti-VCT I-4 engine
5-speed manual transmission
Compact spare
Power front disc/rear drum brakes
Torque Vectoring Control

Seating

Adjustable front and rear head restraints
Cloth seats

Interior

3-spoke steering wheel
AM/FM stereo/single-CD player with MP3 capability, 6 speakers and 80 watts
Auxiliary audio input jack
Day/night rearview mirror
Driver and front-passenger sun visors with vanity mirrors
Ford SYNC® voice-activated, in-vehicle connectivity system with USB port and SYNC Services¹ for Traffic, Directions and Information
Manual windows
Multifunctional digital display in center stack

Exterior

15" steel wheels with silver-painted covers and P185/60R15 all-season tires
Body-color, power sideview mirrors with integrated blind spot mirrors
Carbon Black grille with chrome bars and surround
Liftgate spoiler (hatchback)

Available Options & Packages

Audio upgrade by KICKER® (sedan only)

Cargo Management Package includes cargo net and foldable soft cargo organizer

Exterior Protection Package includes rear bumper protector, and molded splash guards for front and rear (hatchback only)

Fiesta Lower Door Stripe Graphic Package

Keyless entry keypad
PowerShift 6-speed automatic transmission with SelectShift® capability
Remote Start System (requires PowerShift 6-speed automatic transmission)

Smoker's Package

SE Sedan/Hatchback

Equipment Group 200A
Includes select S features, plus:

Seating

Unique cloth seats and door-trim inserts

Interior

12-volt rear powerpoint
Ambient lighting
Chrome door handles
Cruise control
Full center console with armrest
Leather-wrapped steering wheel
Message center with trip computer
MyKey®
Overhead console
Power windows with one-touch-up/-down driver's side window feature
Rear dome light
Steering wheel-mounted audio controls

Exterior

15" Sparkle Silver-painted aluminum wheels
Automatic headlamps
Perimeter alarm
Power sideview mirrors with integrated blind spot mirrors and turn signal indicators
Remote Keyless Entry System with integrated keyhead transmitter remotes (2)

Available Equipment Group

Equipment Group 201A – SE Appearance Package includes MyFord Touch® with 6.5" color LCD touch screen in center stack, and media hub with 2 USB ports, SD card reader and audio input jack; SiriusXM® Satellite Radio; unique Sport cloth seats with contrast stitching; driver's seat manual lumbar; leather-wrapped shift knob (manual only); 16" 8-spoke Sparkle Silver aluminum wheels; fog lamps with chrome bezels; rear decklid spoiler (sedan); and aluminum compact spare wheel

Available Options & Packages

16" 8-spoke Black machined aluminum wheels

Audio upgrade by KICKER (sedan only)

Cargo Management Package includes cargo net and foldable soft cargo organizer

Comfort Package includes electronic automatic temperature control, heated front seats, and heated sideview mirrors

Exterior Protection Package includes rear bumper protector, and molded splash guards for front and rear (hatchback only; n/a with full body-styling kit)

Fiesta Lower Door Stripe Graphic Package

Full body-styling kit includes unique body-color front fascia with black airfoil, body-color rear lower valance with unique black diffuser, body-color-painted side rocker moldings, and front fog lamps (hatchback only)

Interior Protection Package includes black all-weather floor mats for front and rear, and cargo area protector

Keyless entry keypad

Power moonroof

PowerShift 6-speed automatic transmission with SelectShift capability

Remote Start System (requires PowerShift 6-speed automatic transmission)

SE EcoBoost® Fuel Economy Package includes 1.0L EcoBoost I-3 engine, 15" steel wheels with silver-painted covers, and rear decklid spoiler on sedan (requires 5-speed manual transmission and 200A)

Smoker's Package includes cigarette lighter and ash cup

Voice-activated Navigation System with SD card for map and POI storage, and integrated SiriusXM Traffic and Travel Link® with 5-year subscription (requires 201A)



15" Steel with Silver-Painted Covers
Standard: S
Included: SE EcoBoost Fuel Economy Package



15" Sparkle Silver-Painted Aluminum
Standard: SE



16" 8-Spoke Sparkle Silver Aluminum
Included: SE Appearance Package



16" 8-Spoke Black Machined Aluminum
Optional: SE and SE Appearance Package

¹SYNC Services varies by trim level and model year and may require a subscription. Traffic alerts and turn-by-turn directions available in select markets. Message and data rates may apply. Ford Motor Company reserves the right to change or discontinue this product service at any time without prior notification or incurring any future obligation.

Titanium Sedan/Hatchback

Equipment Group 300A

Includes select SE features, plus:

Seating

Adjustable lumbar support for driver's seat

Heated front seats

Leather-trimmed seats

Upgraded door-trim inserts

Interior

Audio System from Sony® with 8 speakers and HD Radio™ Technology

Auto-dimming rearview mirror

Chrome shifter bezel (automatic)

Electronic automatic temperature control

Intelligent Access with push-button start (2 key fob transmitters)

Leather-wrapped shift knob (manual)

Rear view camera

SiriusXM® Satellite Radio with 6-month trial subscription

SYNC® with MyFord Touch® with 6.5" color LCD touch screen in center stack; and media hub with 2 USB ports, SD card reader and audio input jack

Exterior

16" premium Sparkle Nickel-painted aluminum wheels with P195/50R16 all-season tires

Chrome beltline and rear decklid moldings

Chrome headlamp bezels

Fog lamps with chrome surrounds

Heated sideview mirrors

Piano Black-painted lower grille with chrome surround

Reverse Sensing System

Available Options & Packages

Audio upgrade by KICKER® (sedan only)

Cargo Management Package includes cargo net and foldable soft cargo organizer

Exterior Protection Package includes rear bumper protector, and molded splash guards for front and rear (hatchback only)

Fiesta Lower Door Stripe Graphic Package

Interior Protection Package includes black all-weather floor mats for front and rear, and cargo area protector

Power moonroof

PowerShift 6-speed automatic transmission with SelectShift® capability

Remote Start System (requires PowerShift 6-speed automatic transmission)

Smoker's Package includes cigarette lighter and ash cup

Voice-activated Navigation System with SD card for map and POI storage, and integrated SiriusXM Traffic and Travel Link® with 5-year subscription



Sedan. Magnetic. Hatchback. Blue Candy Tinted Clearcoat Metallic. Available equipment.

Electronic automatic temperature control.

Audio System from Sony with 8 speakers and HD Radio Technology.

Heated sideview mirrors.



16" Premium
Sparkle Nickel-Painted Aluminum
Standard



Information Provided by:

DEALER
E-PROCESS

2015 **FIESTA+ST**
ford.com



ST Hatchback

Equipment Group 400A

Includes select SE features, plus:

Mechanical

- 1.6L EcoBoost® I-4 engine
- 6-speed manual transmission
- 3-mode AdvanceTrac® electronic stability control (Standard, Sport, Off)
- Full-size spare wheel and tire (15" x 6")
- Power front and rear disc brakes with performance low-metallic compound brake pads
- Unique ST sport suspension

Seating

- Cloth sport seats with ST logo

Interior

- Aluminum sport pedal covers
- Audio System from Sony® with 8 speakers and HD Radio™ Technology
- Carpeted front and rear floor mats
- Electronic automatic temperature control
- Intelligent Access with push-button start (2 key fob transmitters)
- Leather-wrapped shift knob with metallic insert
- SiriusXM® Satellite Radio with 6-month trial subscription
- Sound symposer
- "ST" branded front floor mats
- SYNC® with MyFord Touch® with 6.5" color LCD touch screen in center stack; and media hub with 2 USB ports, SD card reader and audio input jack
- Unique front door-sill scuff plates with ST logo
- Unique perforated leather-wrapped steering wheel with ST badge

Exterior

- 17" Sparkle Silver-painted aluminum wheels with summer-compound performance tires¹
- Black headlamp bezels
- Fog lamps
- Modified front fascia with chin spoiler
- Rear diffuser
- Side rocker moldings
- Twin chrome exhaust tips
- Unique high-mounted rear spoiler

Available Options & Packages

17" Rado Gray premium painted aluminum wheels with red-painted brake calipers

Cargo Management Package includes cargo net and foldable soft cargo organizer

Over-the-top stripes

Power moonroof

Smoker's Package includes cigarette lighter and ash cup

ST Protection Package includes cargo area protector with ST logo, all-weather floor mats with ST logo, and full vehicle cover with ST logo

ST RECARO Package includes RECARO® partial leather-trimmed front bucket seats with cloth accents, heated front seats, and heated sideview mirrors

Voice-activated Navigation System with SD card for map and POI storage, and integrated SiriusXM Traffic and Travel Link® with 5-year subscription



Performance Blue. Available equipment.

Perforated leather-wrapped steering wheel with ST badge.

Front door-sill scuff plates with ST logo.

6-speed manual transmission shift knob.



17" Sparkle Silver-Painted Aluminum
Standard



17" Rado Gray Premium Painted Aluminum
with Red Brake Calipers
Optional

¹Ford does not recommend using summer tires when temperatures drop to approximately 40°F or below (depending on tire wear and environmental conditions) or in snow/ice conditions. If the vehicle must be driven in these conditions, Ford recommends using all-season or snow tires.



Exteriors



Oxford White



Ingot Silver



Molten Orange Tri-coat Metallic



Race Red



Ruby Red Tinted Clearcoat Metallic



Green Envy Tri-coat Metallic



Blue Candy Tinted Clearcoat Metallic



Performance Blue

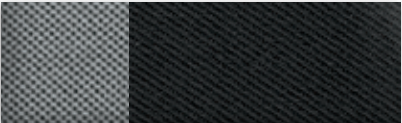


Magnetic

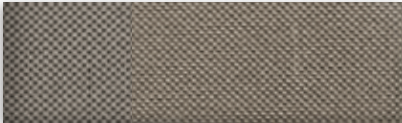


Tuxedo Black

Interiors



1 Charcoal Black Cloth with Sterling Stone Accents



2 Medium Light Stone Cloth



3 Charcoal Black Cloth



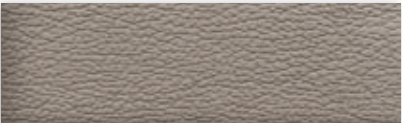
4 Charcoal Black Sport Cloth with Silver Stitching



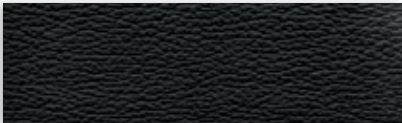
5 Charcoal Black Sport Cloth with Red Stitching



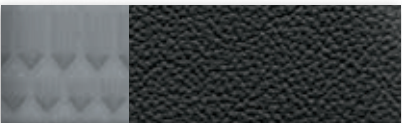
6 Charcoal Black Cloth



7 Medium Light Stone Leather



8 Charcoal Black Leather



9 Charcoal Black Leather with Smoke Storm Cloth Accents



10 Charcoal Black Leather with Molten Orange Cloth Accents

Bring these colors to life



Exteriors	Interiors									
	S	SE				Titanium		ST		
Oxford White	1	2	3	4	5	7	8	6	9	10
Ingot Silver	1	2	3	4	5	7	8	6	9	10
Molten Orange Tri-coat Metallic ¹								6	9	10
Race Red		2	3	4	5	7	8	6	9	
Ruby Red Tinted Clearcoat Metallic ¹		2	3	4	5	7	8			
Green Envy Tri-coat Metallic ¹		2	3	4	5	7	8	6	9	
Blue Candy Tinted Clearcoat Metallic ¹		2	3	4	5	7	8			
Performance Blue			4	5		7	8	6	9	
Magnetic		2	3	4	5	7	8			
Tuxedo Black	1	2	3	4	5	7	8	6	9	10

4, 5 SE Appearance Package 9, 10 ST RECARO® Package

¹Additional charge. Colors are representative only. See your dealer for actual paint/trim options.





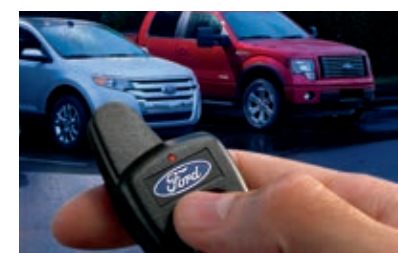
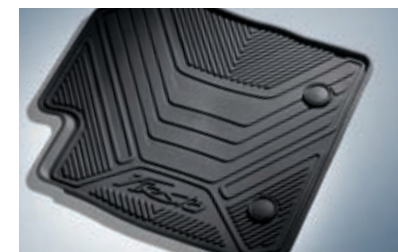
SE Hatchback in Oxford White customized with side window deflectors, lower bodyside graphics, rear roof spoiler and 16" 8-spoke Black machined aluminum wheels¹

Rear roof spoiler

All-weather floor mats

Remote start systems

Cargo area protector



Exterior

Bodyside graphics
Custom graphics and trim kits²
Fog lamp bezels
Full vehicle covers²
Racks and carriers²
Rear bumper protector
Rear spoilers
Splash guards
ST full vehicle cover
ST over-the-top stripes

Interior

Ash cup/coin holders
Cargo organizers and protectors
Carpeted floor mats
Door sill plates
Gear indicator shift knob^{2,3}
Gear shift knobs³
Interior light kit
ST all-weather floor mats
ST cargo area protector
ST door sill plates

Electronics

Audio upgrade by KICKER®
Bumper-mounted warning sensor systems²
Keyless entry keypad
Portable DVD rear-seat entertainment systems²
Vehicle Security System

Wheels

16" 8-spoke Sparkle Silver¹
16" polished¹
Wheel lock kits

See other accessories



FORD ACCESSORIES

accessories.ford.com



Information Provided by:

DEALER
E-PROCESS

¹Additional components may be required. See dealer for details. ²Ford Licensed Accessory. ³Manual transmission only.

Learn more about
your Fiesta



2015
FIESTA+ST



Go Further

ford.com

New Vehicle Limited Warranty. We want your Ford Fiesta ownership experience to be the best it can be. Under this warranty, your new vehicle comes with 3-year/36,000-mile bumper-to-bumper coverage, 5-year/60,000-mile Powertrain Warranty coverage, 5-year/60,000-mile safety restraint coverage, and 5-year/unlimited-mile corrosion (perforation) coverage – all with no deductible. Please ask your Ford Dealer for a copy of this limited warranty.

Roadside Assistance. Covers your vehicle for 5 years or 60,000 miles, so you have the security of knowing that help may be only a phone call away should you run out of fuel, lock yourself out of the vehicle or need towing. Your Ford Dealer can provide complete details on all of these advantages.

Ford Credit. Get the ride you want. Whether you plan to lease or finance, you'll find the choices that are right for you at Ford Credit. Ask your Ford Dealer for details or check us out at fordcredit.com.

Ford Extended Service Plan. For a purchase or lease, the Ford Extended Service Plan (ESP) gives you peace-of-mind protection designed to cover key vehicle components and protect you from the cost of unexpected repairs. Ask your dealer for a Ford ESP, the only service contract backed exclusively by Ford and honored at all Ford Lincoln dealerships.

Insurance Services. Get Ford Motor Company quality in your auto insurance. Our program offers industry-leading benefits and competitive rates. Call 1-877-367-3847, or visit us at fordvip.com for a no-obligation quote. Insurance offered by American Road Services Company (in CA, American Road Insurance Agency), a licensed agency and subsidiary of Ford Motor Company.

Genuine Ford Accessories will be warranted for whichever provides you the greatest benefit: 24 months/unlimited mileage, or the remainder of your Bumper-to-Bumper 3-year/36,000-mile New Vehicle Limited Warranty. Ford Licensed Accessories (FLA) are warranted by the accessory manufacturer's warranty. Ford Licensed Accessories are fully designed and developed by the accessory manufacturer and have not been designed or tested to Ford Motor Company engineering requirements. Contact your Ford Dealer for details and/or a copy of all limited warranties.

Comparisons based on competitive models (class is Subcompact Cars), publicly available information and Ford certification data at time of release. Vehicles may be shown with optional equipment. Features may be offered only in combination with other options or subject to additional ordering requirements/limitations. Dimensions shown may vary due to optional features and/or production variability. Information is provided on an "as is" basis and could include technical, typographical or other errors. Ford makes no warranties, representations, or guarantees of any kind, express or implied, including but not limited to, accuracy, currency, or completeness, the operation of the information, materials, content, availability, and products. Ford reserves the right to change product specifications, pricing and equipment at any time without incurring obligations. Your Ford Dealer is the best source of the most up-to-date information on Ford vehicles.

After trial period expires, SiriusXM Satellite Radio, SiriusXM Traffic and Travel Link subscriptions are sold separately or as a package and are continuous until you call SiriusXM to cancel. See SiriusXM Customer Agreement for complete terms at www.siriusxm.com. SiriusXM Traffic and Travel Link available in select markets. For more information, see www.siriusxm.com/travellink or www.siriusxm.com/traffic. Sirius, XM and all related marks and logos are trademarks of Sirius XM Radio Inc. HD Radio is a proprietary trademark of iBiquity Digital Corp. iHeartAuto is a trademark owned by Clear Channel Broadcasting, Inc. All third party uses are authorized under license. iPod and iTunes are trademarks of Apple Inc., registered in the U.S. and other countries. KICKER is a registered trademark of Stillwater Designs and Audio, Inc. PANDORA, the PANDORA logo, and the Pandora trade dress are trademarks or registered trademarks of Pandora Media, Inc. Used with permission. RECARO is a registered trademark of RECARO Betteiligungs-GmbH. Sony is a registered trademark of the Sony Corporation. The Bluetooth word mark is a trademark of the Bluetooth SIG, Inc.

Follow Ford:



Information Provided by:
DEALER
E-PROCESS